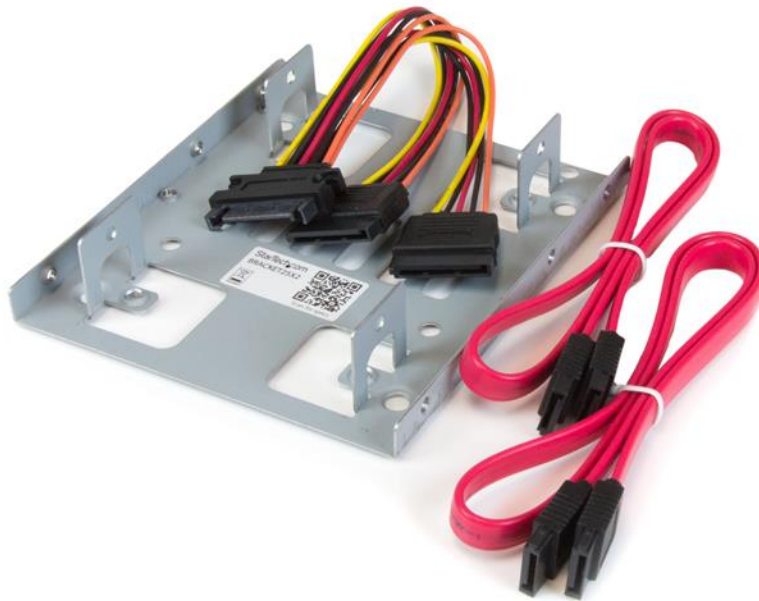


Dual 2.5" to 3.5" HDD Bracket for SATA Hard Drives - 2 Drive 2.5" to 3.5" Bracket for Mounting Bay

Product ID: BRACKET25X2

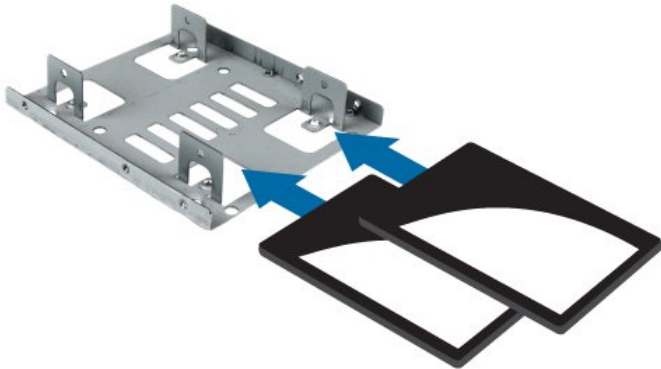


The BRACKET25X2 Dual hard drive mounting bracket kit lets you install two 2.5in SATA hard drives (HDD) or solid state drives (SSD) into a single 3.5in mounting bay -- enabling you to significantly increase the performance of your desktop by adding the speed of a 2.5in SSD.

Maximize the internal mounting space of your computer, by installing two 2.5in hard drives in the same 3.5in bay. The bracket can be used with SATA hard drives and solid states

For a hassle-free installation, the hard drive mounting kit includes all required data and power cabling for both SATA drives. Plus, the bracket can support IDE drives when using our 2.5in to 3.5in IDE Hard Drive cable adapter (IDE4044).

The BRACKET25X2 features solid steel construction, and is backed by a StarTech.com lifetime warranty and free lifetime technical support.



Certifications, Reports and Compatibility



Applications

- Add the performance of 2.5in solid state drives to your desktop computer
- Install up to two 2.5" SATA hard drives into an unused 3.5" bay in a desktop chassis
- Repurpose unused laptop hard drives to work with your desktop computer
- Migrate data from a 2.5in laptop drive to your desktop computer

Features

- Mount up to two 2.5in drives into a single 3.5in bay
- SATA data and power cabling included
- Solid steel construction
- Vertical and horizontal drive mounting holes

	Warranty	Lifetime
Hardware	Interface	SATA
Physical Characteristics	Enclosure Type	Steel
	Product Height	0.9 in [22 mm]
	Product Length	4.6 in [116 mm]
	Product Weight	2.6 oz [73 g]
	Product Width	4 in [102 mm]
Packaging Information	Shipping (Package) Weight	6.7 oz [190 g]
What's in the Box	Included in Package	<ul style="list-style-type: none"> 1 - Dual 2.5" mounting bracket 1 - Drive mounting screw kit 4 - Flat screws and washers (bottom drive) 4 - M3x5mm screws (top drive) 4 - 6-32 Screws (case mount) 2 - SATA data cables 1 - SATA Power Y cable 1 - quick-start guide

Product appearance and specifications are subject to change without notice.