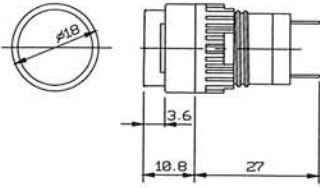


ROUND HEAD PILOT INDICATORS

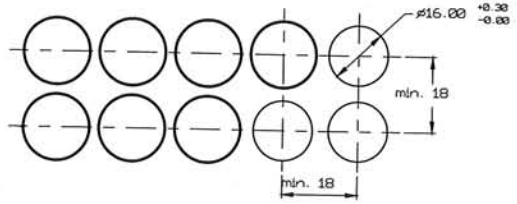
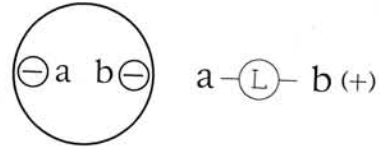


■ Mounting dimensions mm



Accessories see page 13~14
 Technical data see page 2
 Ordering information see page 7

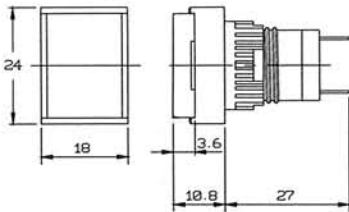
■ Bottom view



RECTANGULAR HEAD PILOT INDICATORS

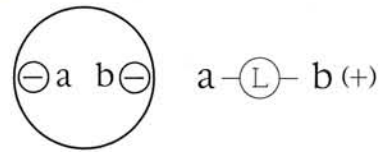


■ Mounting dimensions, mm

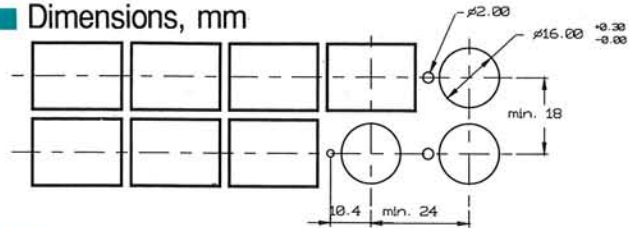


Accessories see page 13~14
 Technical data see page 2
 Ordering information see page 7

■ Bottom view



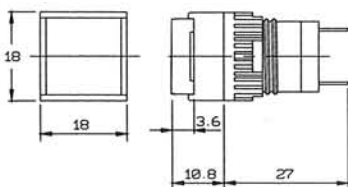
■ Dimensions, mm



SQUARE HEAD PILOT INDICATORS

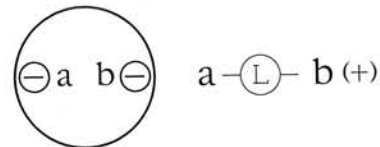


■ Mounting dimensions. mm

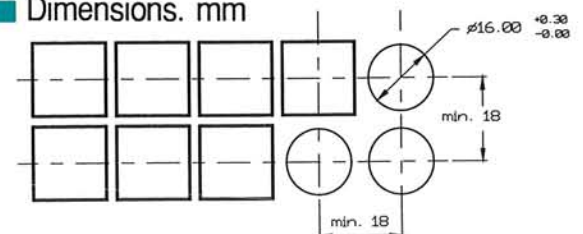


Accessories see page 13~14
 Technical data see page 2
 Ordering information see page 7

■ Bottom view



■ Dimensions. mm



SOLDERING TYPE PUSHBUTTON SWITCHES & INDICATORS ORDER INFORMATION

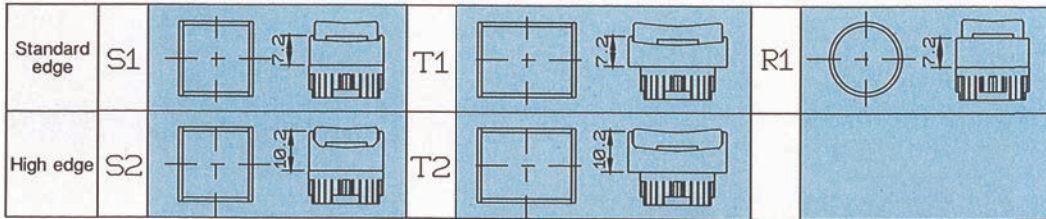
Order no : **D16** —

φ 16 mm basic type: _____

Functions : _____

- LA : Soldering type pushbutton switches with alternate action
- LM : Soldering type pushbutton switches with momentary action
- PL : Pilot indicator

Pushbutton Head : _____



Contact Arrange : _____

- 000 : Non contact
- 1ab : 1 NO + 1 NC
- 2ab : 2 NO + 2 NC
- 3ab : 3 NO + 3 NC
- 4ab : 4 NO + 4 NC

Lamp and Voltage : _____

- 0 : Without lamp
- A : Incandescent 6 V AC/DC 200 mA
- B : Incandescent 14 V AC/DC 80 mA
- C : Incandescent 28 V AC/DC 40 mA
- F : Neon 110 V AC green / red
- G : Neon 220 V AC green / red
- H : LED 6 V DC green / yellow / red
- J : LED 12 V DC green / yellow / red
- K : LED 24 V DC green / yellow / red

Special type :

- M : Incandescent 6 V AC/DC 40 mA
- N : Incandescent 14 V AC/DC 40 mA
- L : Incandescent 33 V AC/DC 35 mA
- D : Incandescent 48 V AC/DC 25 mA
- E : Incandescent 60 V AC/DC 20 mA

Color Lens : _____

- B : Blue G : Green O : Orange
- R : Red W : White Y : Yellow

Order Example :

If you want to order a round head illuminated pushbutton switch with a yellow color lens 60V DC 20 mA incandescent lamp, 3NO + 3NC contacts, alternate action

It's order # as : D16LAR1-3abEY

If you want to order a rectangular head pushbutton switch with high edge, non-illuminated and red color lens, 2NO + 2NC contacts momentary action

It's order # as : D16LMT2-2abOR

If you want to order a square head pilot indicator with standard edge, blue color lens, 28V DC 40mA incandescent lamp.

It's order # as : D16PLS1-000CB