

REV.	DESCRIPTION	DRAWN	CHECKED	APPROVED
A	NEW RELEASE	LJH 07/28/05'		

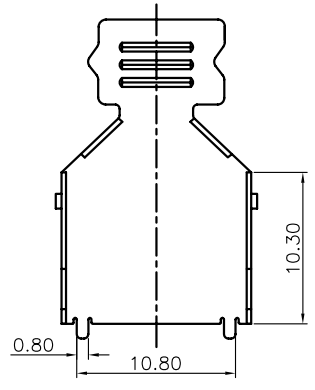
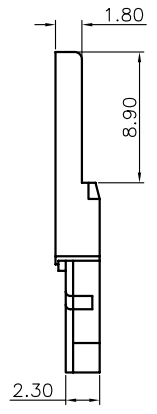
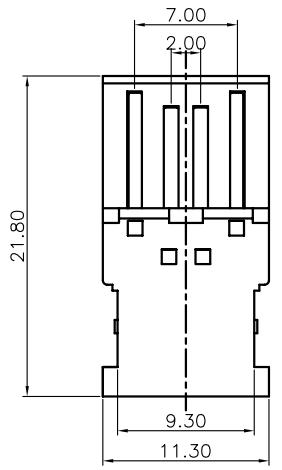
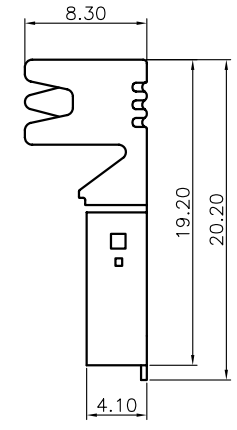
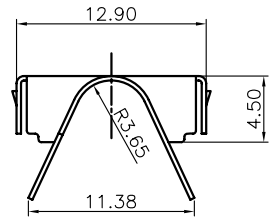
NOTES:

- SPECIFICATIONS:
 - VOLTAGE RATING: 30V DC.
 - CONTACT CURRENT RATING: 1.5A MAX. PER PIN.
 - CONTACT RESISTANCE: 30 mΩ MAX.
 - DIELECTRIC WITHSTANDING VOLTAGE: 500V AC FOR 1 MINUTE.
 - INSULATION RESISTANCE: 1000MΩ MIN.
 - OPERATING TEMPERATURE: -20°C ~ +70°C.

2. PRODUCT NUMBER CODE:

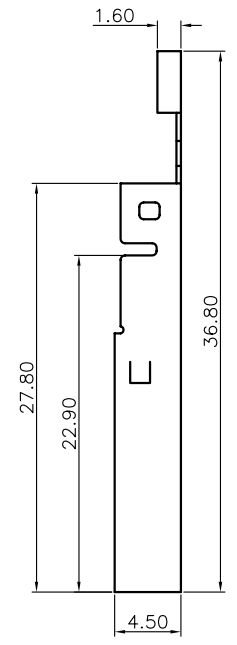
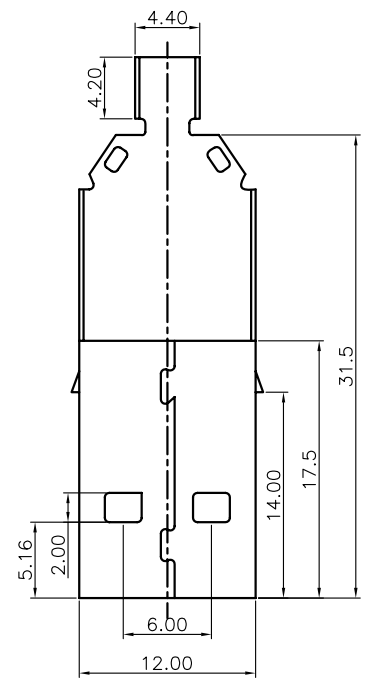
DS1107 - X X X

- CONTACT PLATED:
 - 0: Selective Gold Flash
 - C: 3u" Gold
 - 3: 30u" Gold
- SHELL PLATED:
 - N: Nickel
 - 6: Tin
- COLOR OF HOUSING:
 - W: WHITE
 - B: BLACK
- PRODUCTS SERIES: DS1107



Housing with contact

Upper shell



Down shell

GENERAL TOLERANCE		ANGLE TOLERANCE		PROJECTION		TITLE	USB PLUG A TYPE SOLDER TYPE	
X.	±0.60	X.	±5°	UNITS	mm	SERIES	DS1107	
.X	±0.38	.X	±3°	SHEET SIZE	A4			
.XX	±0.25	.XX	±2°					
DRAWING TYPE		CUSTOMER						
SCALE		1:1	SHEET	1 OF 1				
DRAWING NO.		C-DS1107-XXX						