

HB-IP-2X6-G2-W

~60° wide beam

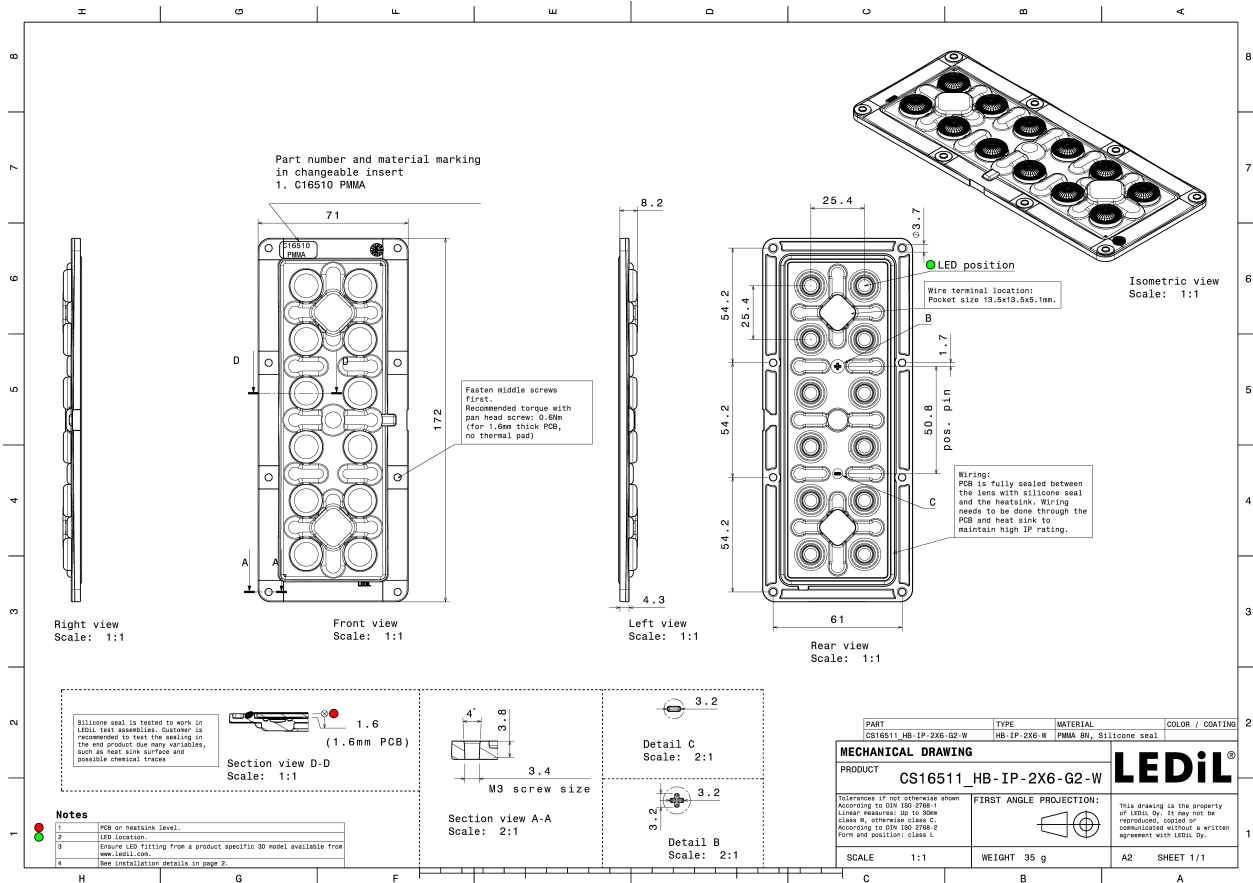
TECHNICAL SPECIFICATIONS:

Dimensions	172.0 x 71.0 mm
Height	8.2 mm
Fastening	pin, screw
Colour	clear
Box size	476 x 273 x 247 mm
Box weight	5.8 kg
Quantity in Box	132 pcs
ROHS compliant	yes ⓘ

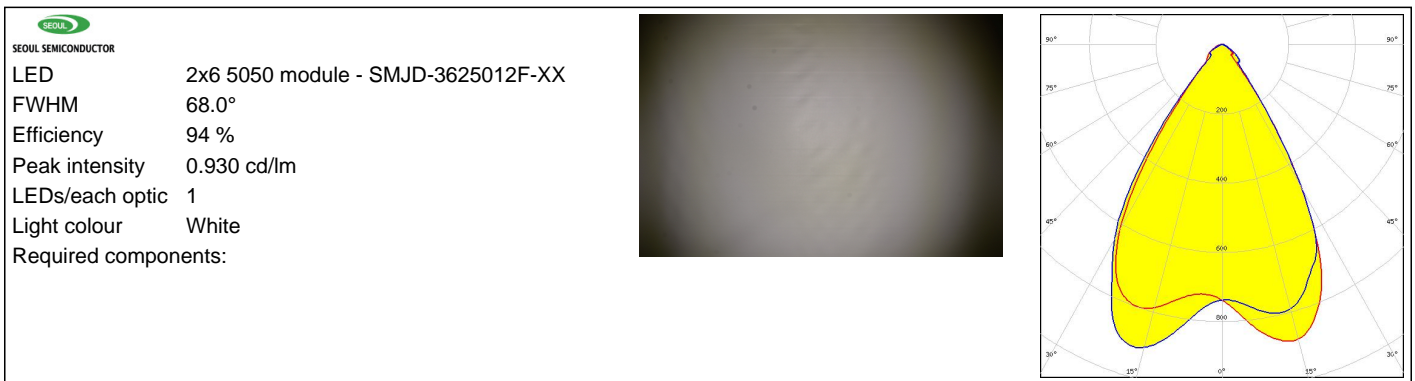


MATERIAL SPECIFICATIONS:


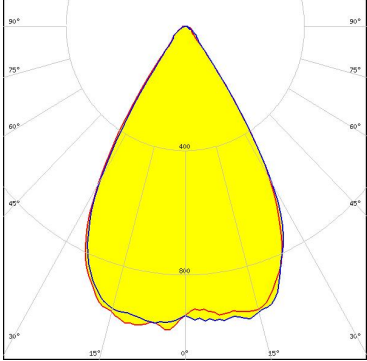

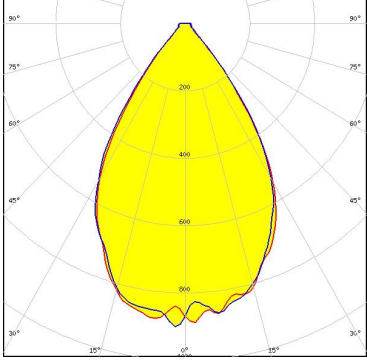

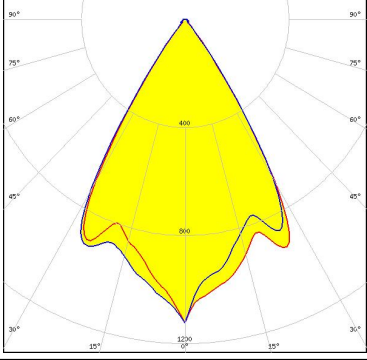

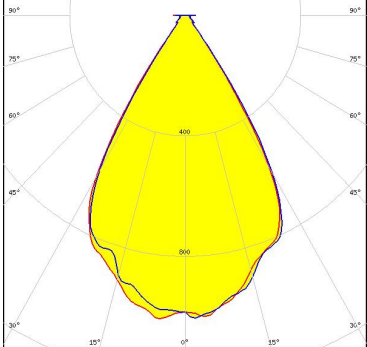
Component	Type	Material	Colour
HB-IP-2X6-G2-W	Multi-lens	PMMA	clear
SEAL-IP-2X6-G2	Seal	Silicone	white



PHOTOMETRIC DATA (MEASURED):



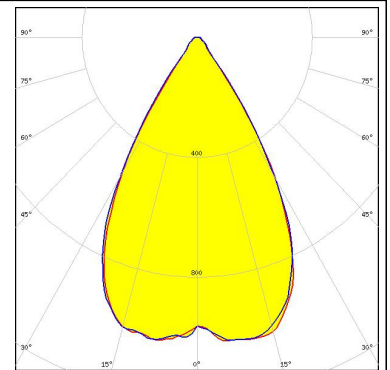
PHOTOMETRIC DATA (SIMULATED):

<p> bridgelux</p> <p>LED Bridgelux SMD 5050 FWHM 62.0° Efficiency 94 % Peak intensity 1.006 cd/lm LEDs/each optic 1 Light colour White Required components:</p>	
<p> CREE</p> <p>LED MHB-A/B FWHM 65.6° Efficiency 94 % Peak intensity 0.902 cd/lm LEDs/each optic 1 Light colour White Required components:</p>	
<p> CREE</p> <p>LED XP-G2 FWHM 63.0° Efficiency 94 % Peak intensity 1.120 cd/lm LEDs/each optic 1 Light colour White Required components:</p>	
<p> CREE</p> <p>LED XP-G3 FWHM 62.4° Efficiency 92 % Peak intensity 1.034 cd/lm LEDs/each optic 1 Light colour White Required components:</p>	

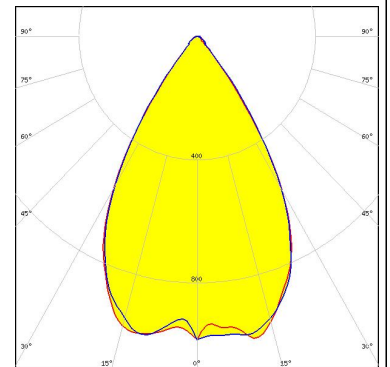
PHOTOMETRIC DATA (SIMULATED):



LED LUXEON 5050
FWHM 59.2°
Efficiency 93 %
Peak intensity 1.033 cd/lm
LEDs/each optic 1
Light colour White
Required components:

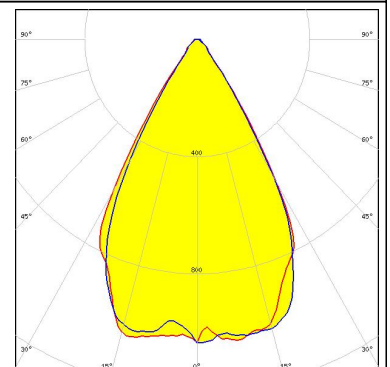


LED NFMW48xA
FWHM 62.4°
Efficiency 94 %
Peak intensity 1.013 cd/lm
LEDs/each optic 1
Light colour White
Required components:



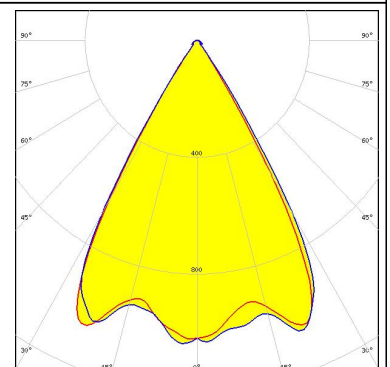
Ospto Semiconductors

LED Duris S8
FWHM 58.3°
Efficiency 94 %
Peak intensity 1.050 cd/lm
LEDs/each optic 1
Light colour White
Required components:



Ospto Semiconductors

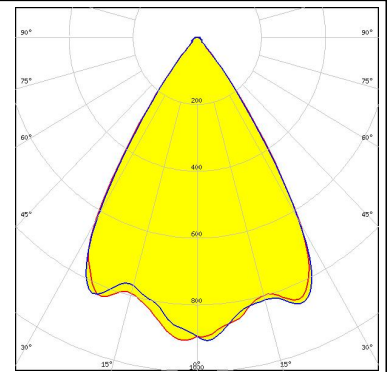
LED OSCONIQ P 3737 (2W version)
FWHM 62.0°
Efficiency 94 %
Peak intensity 1.110 cd/lm
LEDs/each optic 1
Light colour White
Required components:



PHOTOMETRIC DATA (SIMULATED):

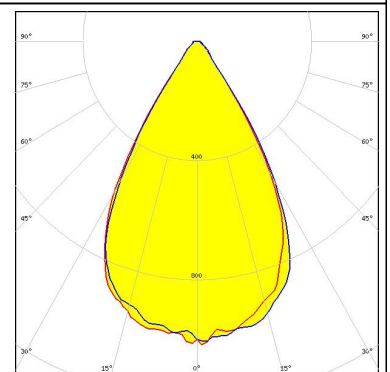
SAMSUNG

LED LH351B
FWHM 65.0°
Efficiency 94 %
Peak intensity 0.930 cd/lm
LEDs/each optic 1
Light colour White
Required components:



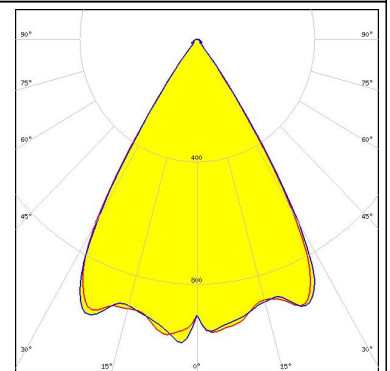
SAMSUNG

LED LH508A
FWHM 60.9°
Efficiency 93 %
Peak intensity 1.070 cd/lm
LEDs/each optic 1
Light colour White
Required components:



SEOUL SEMICONDUCTOR

LED Z5M1/Z5M2
FWHM 63.0°
Efficiency 94 %
Peak intensity 1.000 cd/lm
LEDs/each optic 1
Light colour White
Required components:



GENERAL INFORMATION:

NOTE: The typical beam angle will be changed by different color, chip size and chip position tolerance. The typical total beam angle is the full angle measured where the luminous intensity is half of the peak value.

MATERIALS:

As part of our continuous research and improvement processes, and to ensure the best possible quality and availability of our products, LEDiL reserves the right to change material grades without notice.

PRODUCT DATA USER AGREEMENT AND DISCLAIMER:

The measured data in the provided downloadable LEDiL Product Datasheets and Mechanical 2D-Drawings is rounded and provided as reference for planning. LEDiL Oy's optical specifications have been verified by conducting performance testing of the products in accordance with the company's quality system. The reported data are averaged results of multiple measurements with typical variation. LEDiL Oy reserves the right to without prior notification make changes and improvements to its products.

LEDiL Oy assumes neither warranty, nor guarantee nor any other liability of any kind for the contents and correctness of the provided data. The provided data has been generated with highest diligence but the provided data may in reality not represent the complete possible variation range of all intrinsic parameters. Therefore, in certain cases a deviation from the provided data could occur.

LEDiL Oy reserves the right to undertake technical changes of its products without further notification which could lead to changes in the provided data. LEDiL Oy assumes no liability of any kind for the possible deviation from any provided data or any other damage resulting from the usage of the provided data.

The user agrees to this disclaimer and user agreement with the download or usage of the provided files.

LEDiL Oy

Joensuunkatu 13
FI-24240 SALO
Finland

LEDiL Inc.

228 West Page Street
Suite D
Sycamore IL 60178
USA

Local sales and technical support

[www.ledil.com/
where_to_buy](http://www.ledil.com/where_to_buy)

Shipping locations

Salo, Finland
Hong Kong, China

Distribution Partners

[www.ledil.com/
where_to_buy](http://www.ledil.com/where_to_buy)