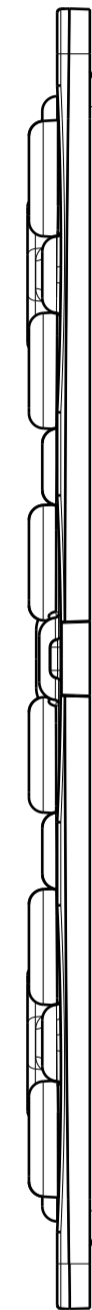
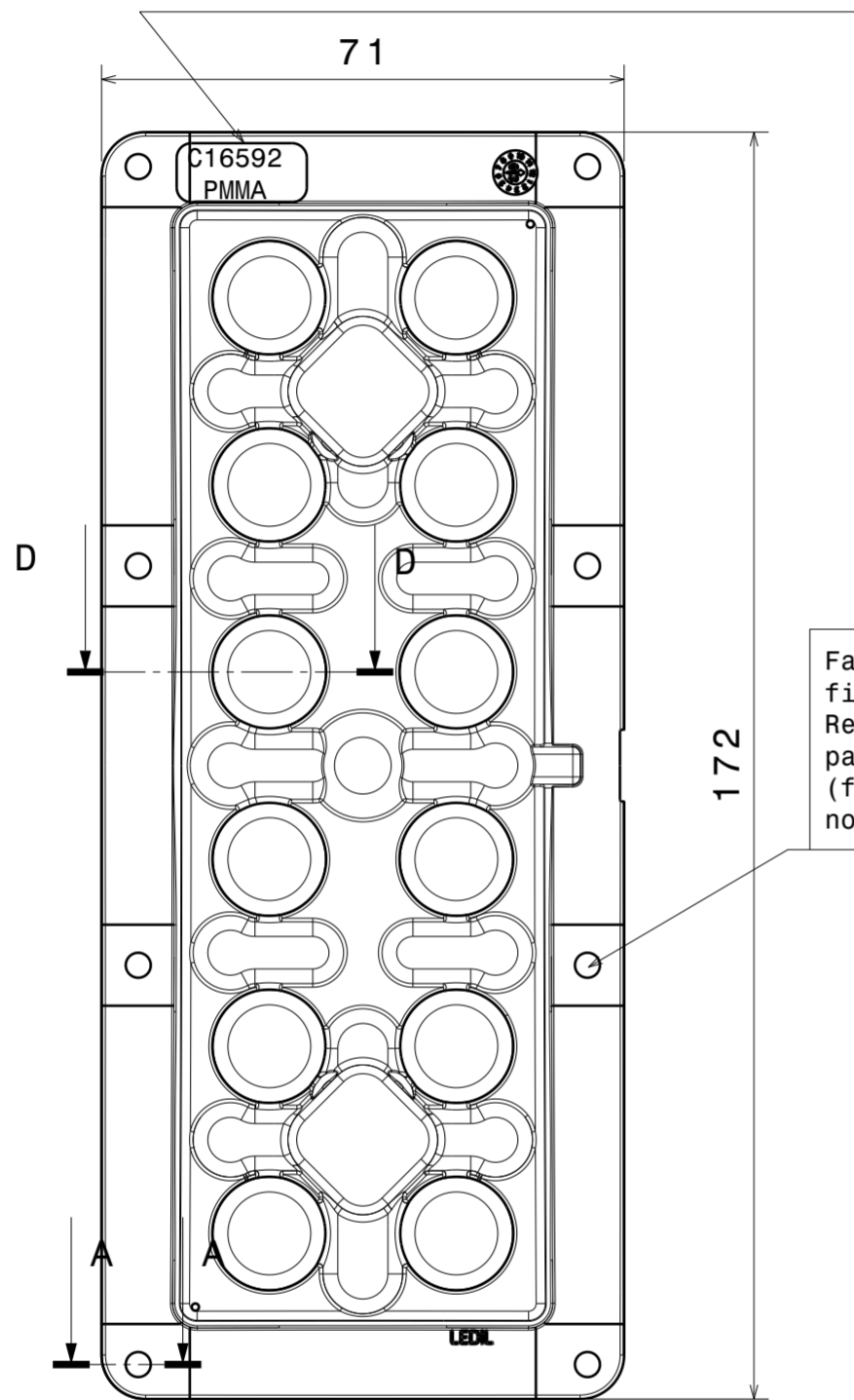


Isometric view
Scale: 1:1

Part number and material marking
in changeable insert
1. C16592 PMMA

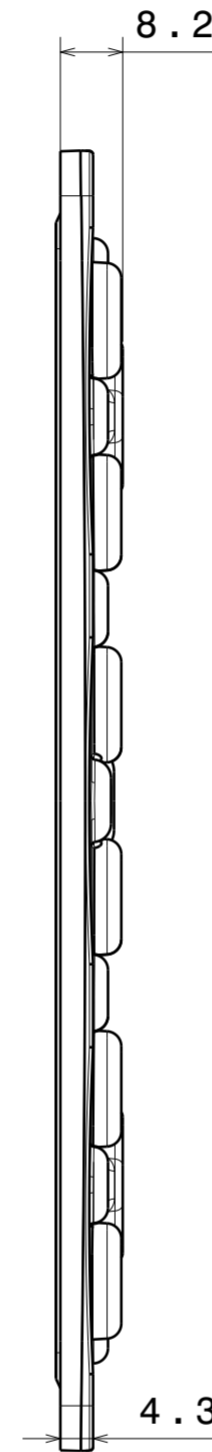


Right view
Scale: 1:1

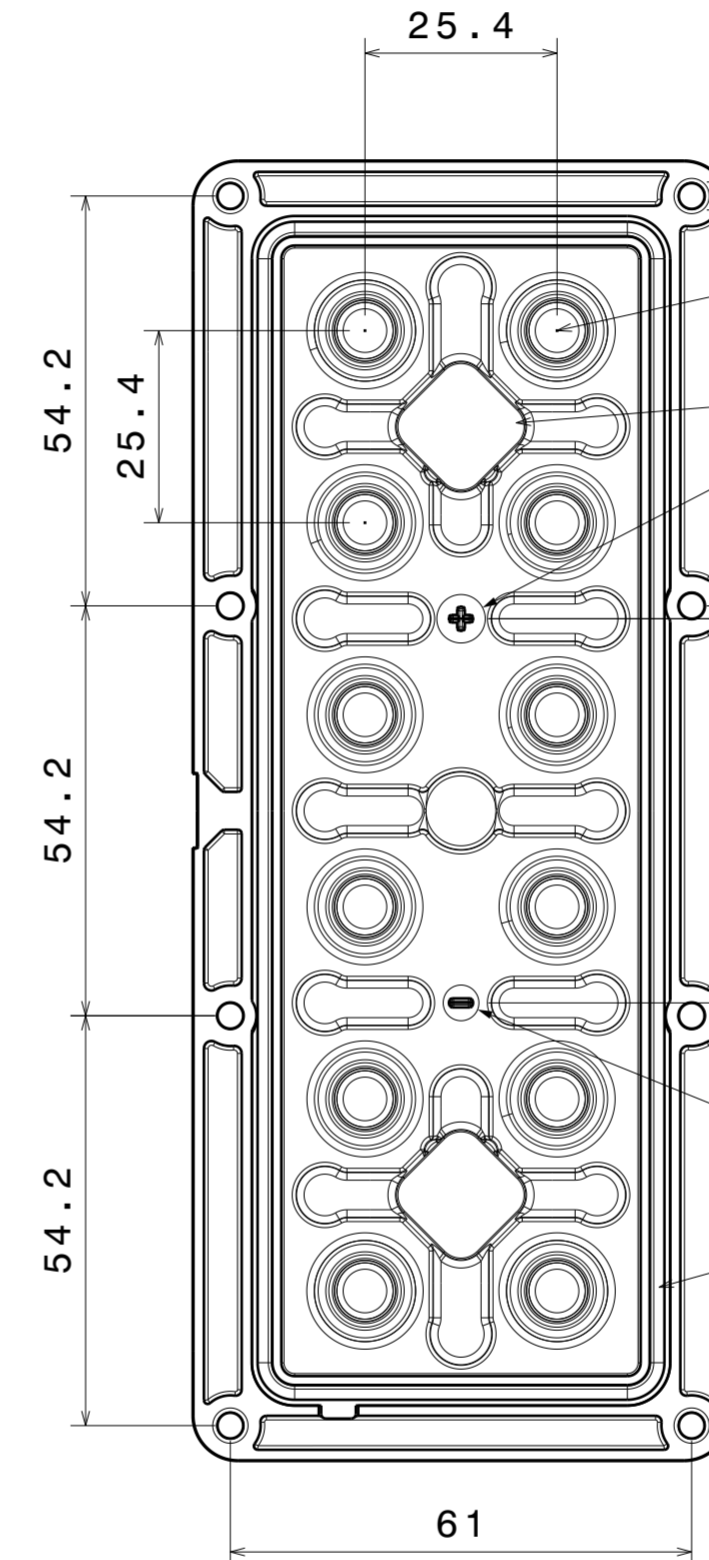


Front view
Scale: 1:1

Fasten middle screws
first.
Recommended torque with
pan head screw: 0.6Nm
(for 1.6mm thick PCB,
no thermal pad)



Left view
Scale: 1:1



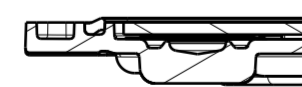
Rear view
Scale: 1:1

LED position

Wire terminal location:
Pocket size 13.5x13.5x5.1mm.

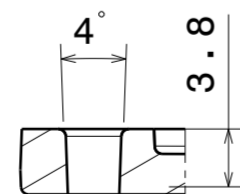
Wiring:
PCB is fully sealed between
the lens with silicone seal
and the heatsink. Wiring
needs to be done through the
PCB and heat sink to
maintain high IP rating.

Silicone seal is tested to work in
LEDiL test assemblies. Customer is
recommended to test the sealing in
the end product due many variables,
such as heat sink surface and
possible chemical traces



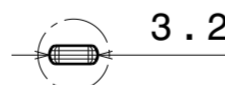
Section view D-D
Scale: 1:1

1.6
(1.6mm PCB)

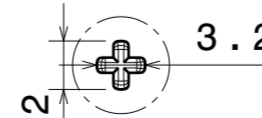


Section view A-A
Scale: 2:1

3.4
M3 screw size



Detail C
Scale: 2:1



Detail B
Scale: 2:1

Notes

1	PCB or heatsink level.
2	LED location.
3	Ensure LED fitting from a product specific 3D model available from www.ledil.com .
4	See installation details in page 2.

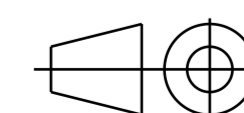
PART	TYPE	MATERIAL	COLOR / COATING
CS16593 HB-IP-2X6-G2-WWW	HB-IP-2X6-WWW	PMMA 8N, Silicone seal	

MECHANICAL DRAWING

PRODUCT
CS16593 HB-IP-2X6-G2-WWW

Tolerances if not otherwise shown
According to DIN ISO 2768-1
Linear measures: Up to 30mm
class M, otherwise class C.
According to DIN ISO 2768-2
Form and position: class L

FIRST ANGLE PROJECTION:



SCALE 1:1

WEIGHT 35 g

A2 SHEET 1/1

LEDiL®

This drawing is the property
of LEDiL Oy. It may not be
reproduced, copied or
communicated without a written
agreement with LEDiL Oy.