

FLORENCE-Z90-B

~90° wide beam with added compatibility for Philips G4 LED modules

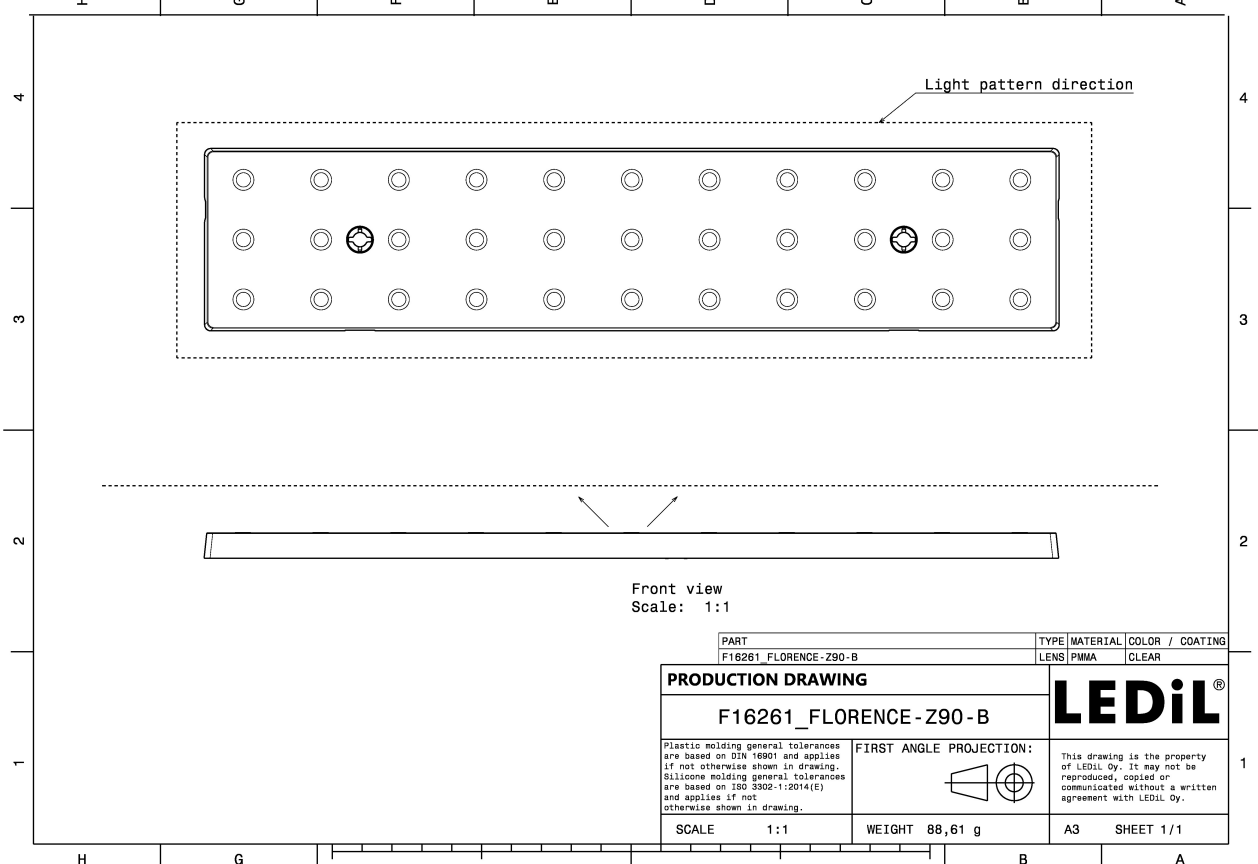
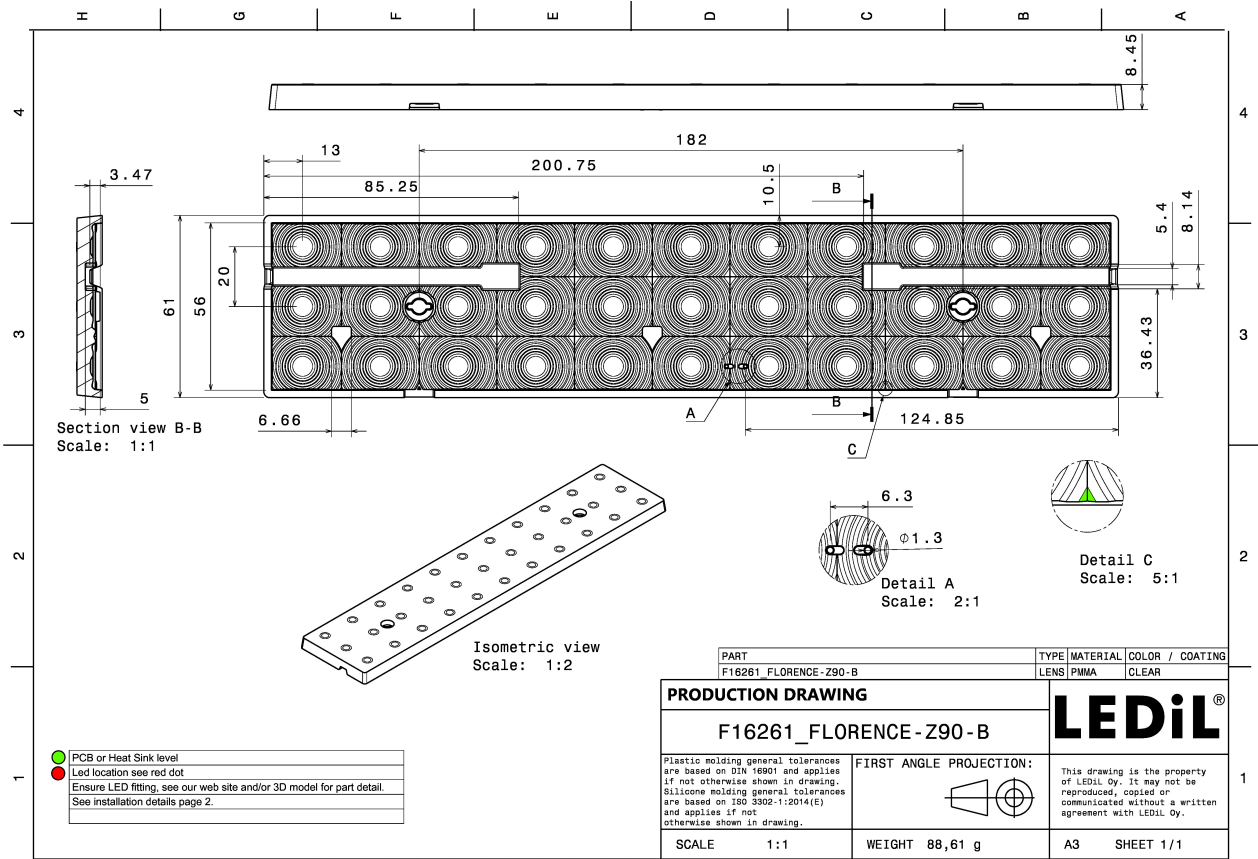
TECHNICAL SPECIFICATIONS:

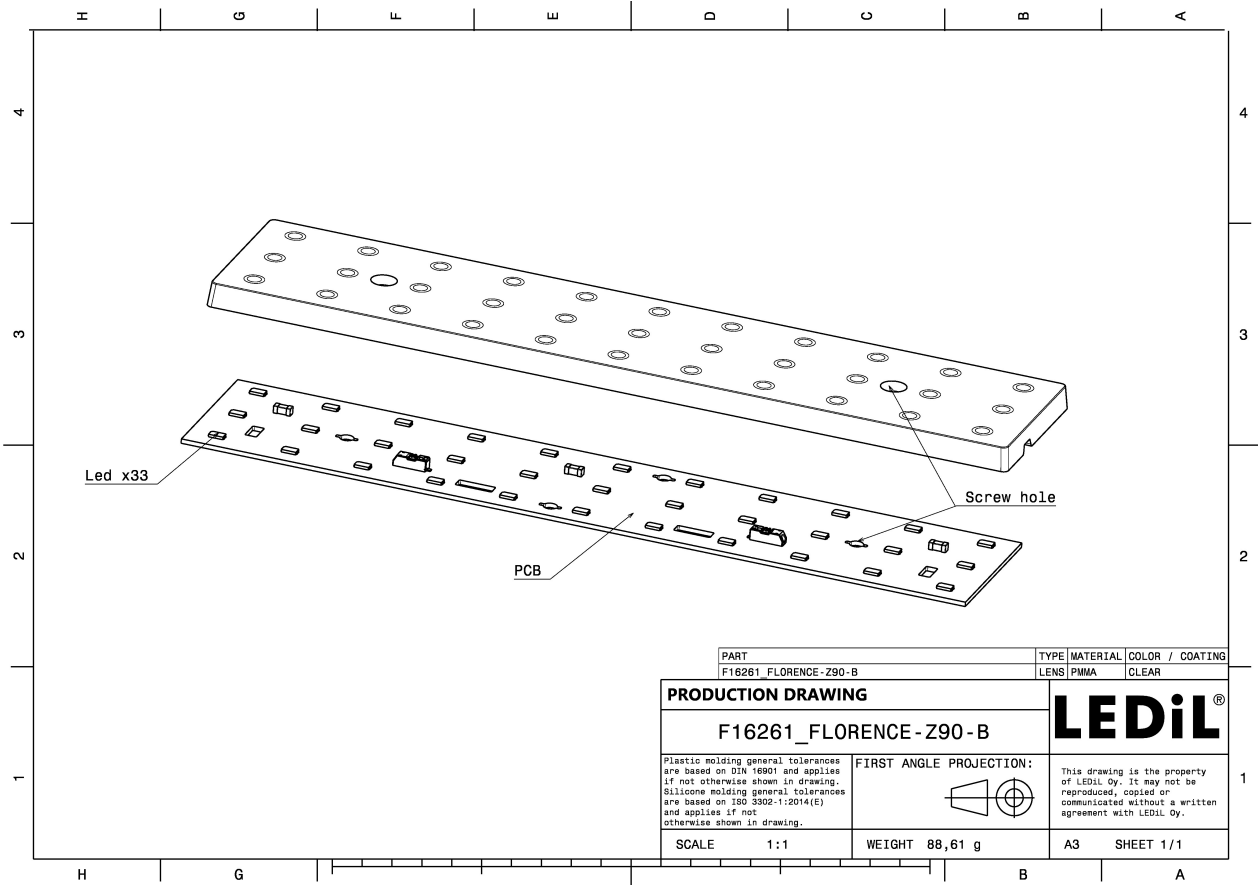
Dimensions	61.0 x 286.0 mm
Height	8.5 mm
Fastening	screw
Colour	clear
Box size	398 x 298 x 140 mm
Box weight	7.8 kg
Quantity in Box	72 pcs
ROHS compliant	yes ⓘ

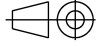


MATERIAL SPECIFICATIONS:

Component	Type	Material	Colour
FLORENCE-Z90-B	Linear lens	PMMA	clear





PART		TYPE	MATERIAL	COLOR / COATING
F16261_FLORENCE-Z90-B		LENS	PMMA	CLEAR
PRODUCTION DRAWING		LEDiL®		
F16261_FLORENCE-Z90-B				
<small>Plastic molding general tolerances are based on DIN 16901 and applies if not otherwise shown in drawing. Silicone molding general tolerances are based on ISO 3302-1:2014(E) and applies if not otherwise shown in drawing.</small>		FIRST ANGLE PROJECTION: 		<small>This drawing is the property of LEDiL Oy. It may not be reproduced, copied or communicated without a written agreement with LEDiL Oy.</small>
SCALE	1:1	WEIGHT	88,61 g	A3 SHEET 1/1

PHOTOMETRIC DATA (MEASURED):



LED TRIDINO R3 8x0 1100 1ft HV
FWHM 92.0°
Efficiency 87 %
Peak intensity 0.410 cd/lm
LEDs/each optic 1
Light colour White
Required components:



LED XH-B/G
FWHM 95.0°
Efficiency 82 %
Peak intensity 0.370 cd/lm
LEDs/each optic 1
Light colour White
Required components:



LED LG 5630
FWHM 93.0°
Efficiency 87 %
Peak intensity 0.390 cd/lm
LEDs/each optic 1
Light colour White
Required components:



LED LG 6030
FWHM 92.0°
Efficiency 88 %
Peak intensity 0.410 cd/lm
LEDs/each optic 1
Light colour White
Required components:

PHOTOMETRIC DATA (MEASURED):

LUMILEDS

LED LUXEON 3030 2D (Round LES)
FWHM 91.0°
Efficiency 87 %
Peak intensity 0.420 cd/lm
LEDs/each optic 1
Light colour White
Required components:

LUMILEDS

LED LUXEON 3535 2D
FWHM 92.0°
Efficiency 87 %
Peak intensity 0.410 cd/lm
LEDs/each optic 1
Light colour White
Required components:

LUMILEDS

LED LUXEON 3535L HE
FWHM 92.0°
Efficiency 93 %
Peak intensity 0.420 cd/lm
LEDs/each optic 1
Light colour White
Required components:

LUMILEDS

LED LUXEON XR-3535L (L202 - xxxx033C30001)
FWHM 91.0°
Efficiency 93 %
Peak intensity 0.430 cd/lm
LEDs/each optic 1
Light colour White
Required components:

PHOTOMETRIC DATA (MEASURED):

LUMINUS

LED MP-2016
FWHM 90.0°
Efficiency 91 %
Peak intensity 0.420 cd/lm
LEDs/each optic 1
Light colour White
Required components:

NICHIA

LED NF2x757D
FWHM 92.0°
Efficiency 90 %
Peak intensity 0.430 cd/lm
LEDs/each optic 1
Light colour White
Required components:

OSRAM

LED PLG2-BAR-1100-xxx-280x55-DC
FWHM 92.0°
Efficiency 92 %
Peak intensity 0.420 cd/lm
LEDs/each optic 1
Light colour White
Required components:

OSRAM Opto Semiconductors

LED Duris E5
FWHM 92.0°
Efficiency 88 %
Peak intensity 0.400 cd/lm
LEDs/each optic 1
Light colour White
Required components:

PHOTOMETRIC DATA (MEASURED):

OSRAM

Opto Semiconductors

LED Duris S2
FWHM 95.0°
Efficiency 90 %
Peak intensity 0.350 cd/lm
LEDs/each optic 1
Light colour White
Required components:

OSRAM

Opto Semiconductors

LED Duris S5 (Single chip)
FWHM 91.0°
Efficiency 88 %
Peak intensity 0.410 cd/lm
LEDs/each optic 1
Light colour White
Required components:

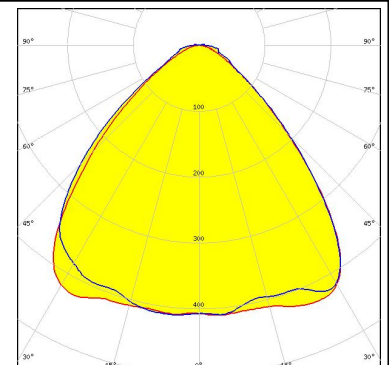
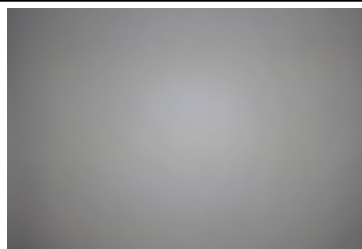
OSRAM

Opto Semiconductors

LED OSCONIQ P 2226
FWHM 94.0°
Efficiency 83 %
Peak intensity 0.370 cd/lm
LEDs/each optic 1
Light colour White
Required components:

PHILIPS

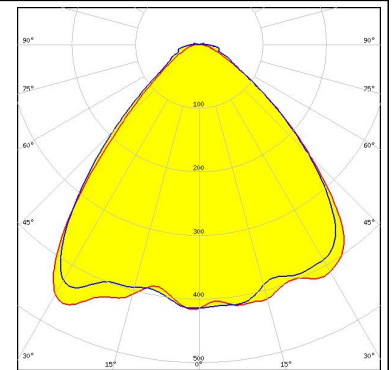
LED Fortimo LED Line 1ft 1100lm 3R HV4
FWHM 91.0°
Efficiency 94 %
Peak intensity 0.430 cd/lm
LEDs/each optic 1
Light colour White
Required components:



PHOTOMETRIC DATA (MEASURED):

PHILIPS

LED Fortimo LED Line 1ft 650lm 3R HV4 & LV4
FWHM 87.0°
Efficiency 94 %
Peak intensity 0.500 cd/lm
LEDs/each optic 1
Light colour White
Required components:



SAMSUNG

LED LM231 A/B
FWHM 91.0°
Efficiency 88 %
Peak intensity 0.414 cd/lm
LEDs/each optic 1
Light colour White
Required components:

SAMSUNG

LED LM561B
FWHM 86.0°
Efficiency 85 %
Peak intensity 0.420 cd/lm
LEDs/each optic 1
Light colour White
Required components:

SAMSUNG

LED LM561B Plus
FWHM 92.0°
Efficiency 93 %
Peak intensity 0.410 cd/lm
LEDs/each optic 1
Light colour White
Required components:


PHOTOMETRIC DATA (MEASURED):

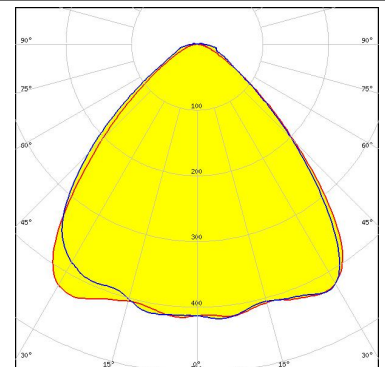
SAMSUNG


LED LM561C
FWHM 92.0°
Efficiency 93 %
Peak intensity 0.420 cd/lm
LEDs/each optic 1
Light colour White
Required components:

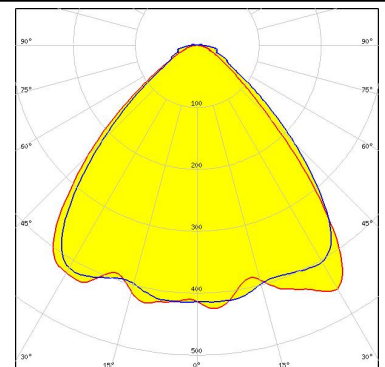
SAMSUNG

LED LT-R286A
FWHM 93.0°
Efficiency 93 %
Peak intensity 0.410 cd/lm
LEDs/each optic 1
Light colour White
Required components:


SEOUL SEMICONDUCTOR
LED SEOUL 5630C
FWHM 91.0°
Efficiency 94 %
Peak intensity 0.430 cd/lm
LEDs/each optic 1
Light colour White
Required components:



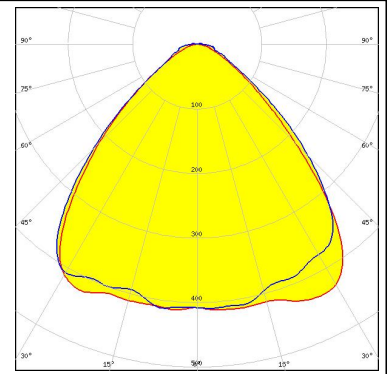

SEOUL SEMICONDUCTOR
LED SEOUL DC 3030
FWHM 91.0°
Efficiency 94 %
Peak intensity 0.450 cd/lm
LEDs/each optic 1
Light colour White
Required components:



PHOTOMETRIC DATA (MEASURED):

TRIDONIC

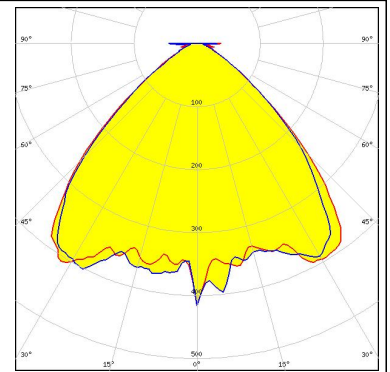
LED LLE G2 55mm 2000lm
FWHM 92.0°
Efficiency 94 %
Peak intensity 0.430 cd/lm
LEDs/each optic 1
Light colour White
Required components:



PHOTOMETRIC DATA (SIMULATED):



LED XP-G3
FWHM 95.0°
Efficiency 92 %
Peak intensity 0.421 cd/lm
LEDs/each optic 1
Light colour White
Required components:



LED LG 7030
FWHM 91.0°
Efficiency 0 %
Peak intensity 0.320 cd/lm
LEDs/each optic 1
Light colour White
Required components:

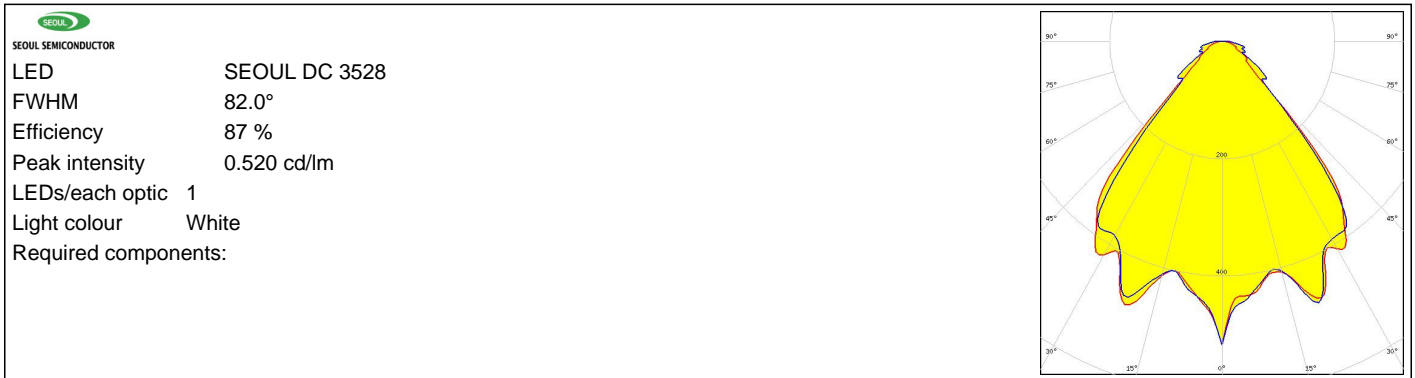


LED NF2x757G
FWHM 90.0°
Efficiency 80 %
Peak intensity 0.370 cd/lm
LEDs/each optic 1
Light colour White
Required components:



LED NVSxE21A
FWHM 90.0°
Efficiency 94 %
Peak intensity 0.390 cd/lm
LEDs/each optic 1
Light colour White
Required components:

PHOTOMETRIC DATA (SIMULATED):



GENERAL INFORMATION:

NOTE: The typical beam angle will be changed by different color, chip size and chip position tolerance. The typical total beam angle is the full angle measured where the luminous intensity is half of the peak value.

MATERIALS:

As part of our continuous research and improvement processes, and to ensure the best possible quality and availability of our products, LEDiL reserves the right to change material grades without notice.

PRODUCT DATA USER AGREEMENT AND DISCLAIMER:

The measured data in the provided downloadable LEDiL Product Datasheets and Mechanical 2D-Drawings is rounded and provided as reference for planning. LEDiL Oy's optical specifications have been verified by conducting performance testing of the products in accordance with the company's quality system. The reported data are averaged results of multiple measurements with typical variation. LEDiL Oy reserves the right to without prior notification make changes and improvements to its products.

LEDiL Oy assumes neither warranty, nor guarantee nor any other liability of any kind for the contents and correctness of the provided data. The provided data has been generated with highest diligence but the provided data may in reality not represent the complete possible variation range of all intrinsic parameters. Therefore, in certain cases a deviation from the provided data could occur.

LEDiL Oy reserves the right to undertake technical changes of its products without further notification which could lead to changes in the provided data. LEDiL Oy assumes no liability of any kind for the possible deviation from any provided data or any other damage resulting from the usage of the provided data.

The user agrees to this disclaimer and user agreement with the download or usage of the provided files.

LEDiL Oy

Joensuunkatu 13
FI-24240 SALO
Finland

LEDiL Inc.

228 West Page Street
Suite D
Sycamore IL 60178
USA

Local sales and technical support

[www.ledil.com/
where_to_buy](http://www.ledil.com/where_to_buy)

Shipping locations

Salo, Finland
Hong Kong, China

Distribution Partners

[www.ledil.com/
where_to_buy](http://www.ledil.com/where_to_buy)