

CMDZ2V4 THRU CMDZ47V

SURFACE MOUNT
SILICON ZENER DIODE
2.4 VOLTS THRU 47 VOLTS
250mW, 5% TOLERANCE

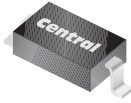


www.centrasemi.com

DESCRIPTION:

The CENTRAL SEMICONDUCTOR CMDZ2V4 Series Zener Diode is a high quality voltage regulator in an epoxy-molded **SUPERmini™** package, designed for applications requiring low leakage.

SUPERmini™



SOD-323 CASE

MARKING CODE: SEE MARKING CODES ON ELECTRICAL CHARACTERISTICS TABLE

MAXIMUM RATINGS: ($T_A = 50^\circ\text{C}$)

Power Dissipation

SYMBOL

P_D

250

UNIT

mW

Operating and Storage Junction Temperature

T_J, T_{stg}

-65 to +175

$^\circ\text{C}$

ELECTRICAL CHARACTERISTICS: ($T_A = 25^\circ\text{C}$), $V_F = 0.9 \text{ MAX @ } I_F = 10 \text{ mA}$ (FOR ALL TYPES)

| TYPE | ZENER VOLTAGE $V_Z @ I_{ZT}$ | | | TEST CURRENT | MAXIMUM ZENER IMPEDANCE | MAXIMUM REVERSE CURRENT | | MARKING CODE |
|---------|---------------------------------|-----|-------|--------------|-------------------------|-------------------------|-----|--------------|
| | MIN | NOM | MAX | I_{ZT} | $Z_{ZT} @ I_{ZT}$ | $I_R @ V_R$ | | |
| | V | V | V | mA | Ω | μA | V | |
| CMDZ2V4 | 2.28 | 2.4 | 2.52 | 5.0 | 100 | 25 | 1.0 | 2V4 |
| CMDZ2V6 | 2.47 | 2.6 | 2.73 | 5.0 | 100 | 25 | 1.0 | 2V6 |
| CMDZ2V7 | 2.57 | 2.7 | 2.84 | 5.0 | 100 | 10 | 1.0 | 2V7 |
| CMDZ3V0 | 2.85 | 3.0 | 3.15 | 5.0 | 95 | 5.0 | 1.0 | 3V0 |
| CMDZ3V3 | 3.14 | 3.3 | 3.47 | 5.0 | 95 | 2.0 | 1.0 | 3V3 |
| CMDZ3V6 | 3.42 | 3.6 | 3.78 | 5.0 | 90 | 2.0 | 1.0 | 3V6 |
| CMDZ3V9 | 3.71 | 3.9 | 4.10 | 5.0 | 90 | 2.0 | 1.0 | 3V9 |
| CMDZ4V3 | 4.09 | 4.3 | 4.52 | 5.0 | 90 | 1.0 | 1.0 | 4V3 |
| CMDZ4V7 | 4.47 | 4.7 | 4.94 | 5.0 | 80 | 3.0 | 2.0 | 4V7 |
| CMDZ5V1 | 4.85 | 5.1 | 5.36 | 5.0 | 60 | 2.0 | 2.0 | 5V1 |
| CMDZ5V6 | 5.32 | 5.6 | 5.88 | 5.0 | 40 | 1.0 | 2.0 | 5V6 |
| CMDZ6V2 | 5.89 | 6.2 | 6.51 | 5.0 | 10 | 3.0 | 4.0 | 6V2 |
| CMDZ6V8 | 6.46 | 6.8 | 7.14 | 5.0 | 15 | 2.0 | 4.0 | 6V8 |
| CMDZ7V5 | 7.12 | 7.5 | 7.88 | 5.0 | 15 | 1.0 | 5.0 | 7V5 |
| CMDZ8V2 | 7.79 | 8.2 | 8.61 | 5.0 | 15 | 0.7 | 5.0 | 8V2 |
| CMDZ9V1 | 8.65 | 9.1 | 9.56 | 5.0 | 15 | 0.5 | 6.0 | 9V1 |
| CMDZ10V | 9.50 | 10 | 10.50 | 5.0 | 20 | 0.2 | 7.0 | 10V |
| CMDZ11V | 10.45 | 11 | 11.55 | 5.0 | 20 | 0.1 | 8.0 | 11V |
| CMDZ12V | 11.40 | 12 | 12.60 | 5.0 | 25 | 0.1 | 8.0 | 12V |
| CMDZ13V | 12.35 | 13 | 13.65 | 5.0 | 30 | 0.1 | 8.0 | 13V |

R2 (8-January 2010)

CMDZ2V4 THRU CMDZ47V

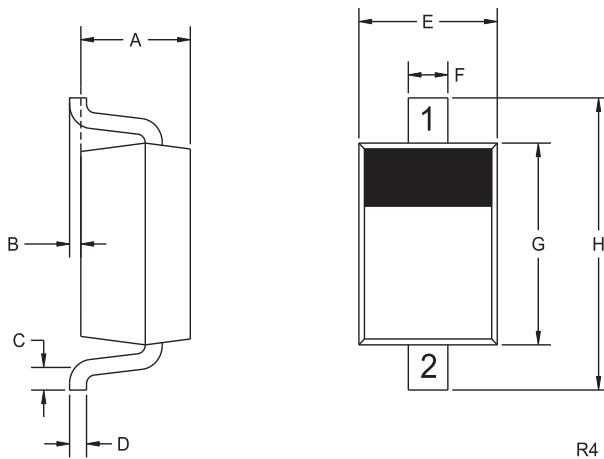
**SURFACE MOUNT
SILICON ZENER DIODE
2.4 VOLTS THRU 47 VOLTS
250mW, 5% TOLERANCE**



ELECTRICAL CHARACTERISTICS - Continued: ($T_A=25^\circ\text{C}$), $V_F=0.9$ MAX @ $I_F=10\text{mA}$ (FOR ALL TYPES)

| TYPE | ZENER VOLTAGE $V_Z @ I_{ZT}$ | | | TEST CURRENT | MAXIMUM ZENER IMPEDANCE | MAXIMUM REVERSE CURRENT | | MARKING CODE |
|----------------|---------------------------------|-----|-------|--------------|-------------------------|-------------------------|------|--------------|
| | MIN | NOM | MAX | I_{ZT} | $Z_{ZT} @ I_{ZT}$ | $I_R @ V_R$ | | |
| | V | V | V | mA | Ω | μA | V | |
| CMDZ15V | 14.25 | 15 | 15.75 | 5.0 | 30 | 0.05 | 10.5 | 15V |
| CMDZ16V | 15.20 | 16 | 16.80 | 5.0 | 40 | 0.05 | 11.2 | 16V |
| CMDZ18V | 17.10 | 18 | 18.90 | 5.0 | 45 | 0.05 | 12.6 | 18V |
| CMDZ20V | 19.00 | 20 | 21.00 | 5.0 | 55 | 0.05 | 14.0 | 20V |
| CMDZ22V | 20.90 | 22 | 23.10 | 5.0 | 55 | 0.05 | 15.4 | 22V |
| CMDZ24V | 22.80 | 24 | 25.20 | 5.0 | 70 | 0.05 | 16.8 | 24V |
| CMDZ27V | 25.65 | 27 | 28.35 | 5.0 | 80 | 0.05 | 18.9 | 27V |
| CMDZ30V | 28.50 | 30 | 31.50 | 5.0 | 80 | 0.05 | 21.0 | 30V |
| CMDZ33V | 31.35 | 33 | 34.65 | 5.0 | 80 | 0.05 | 23.1 | 33V |
| CMDZ36V | 34.20 | 36 | 37.80 | 5.0 | 90 | 0.05 | 25.2 | 36V |
| CMDZ39V | 37.05 | 39 | 40.95 | 5.0 | 130 | 0.05 | 27.3 | 39V |
| CMDZ43V | 40.85 | 43 | 45.15 | 5.0 | 150 | 0.05 | 30.1 | 43V |
| CMDZ47V | 44.65 | 47 | 49.35 | 5.0 | 180 | 0.05 | 32.9 | 47V |

SOD-323 CASE - MECHANICAL OUTLINE



| SYMBOL | INCHES | | MILLIMETERS | |
|--------|--------|-------|-------------|------|
| | MIN | MAX | MIN | MAX |
| A | 0.031 | 0.039 | 0.80 | 1.00 |
| B | 0.000 | 0.004 | 0.00 | 0.10 |
| C | 0.008 | - | 0.20 | - |
| D | 0.004 | 0.007 | 0.11 | 0.19 |
| E | 0.045 | 0.053 | 1.15 | 1.35 |
| F | - | 0.014 | - | 0.35 |
| G | 0.063 | 0.071 | 1.60 | 1.80 |
| H | 0.094 | 0.102 | 2.40 | 2.60 |

SOD-323 (REV: R4)

LEAD CODE:

- 1) CATHODE
- 2) ANODE

R2 (8-January 2010)

OUTSTANDING SUPPORT AND SUPERIOR SERVICES



PRODUCT SUPPORT

Central's operations team provides the highest level of support to insure product is delivered on-time.

- Supply management (Customer portals)
- Inventory bonding
- Consolidated shipping options
- Custom bar coding for shipments
- Custom product packing

DESIGNER SUPPORT/SERVICES

Central's applications engineering team is ready to discuss your design challenges. Just ask.

- Free quick ship samples (2nd day air)
- Online technical data and parametric search
- SPICE models
- Custom electrical curves
- Environmental regulation compliance
- Customer specific screening
- Up-screening capabilities
- Special wafer diffusions
- PbSn plating options
- Package details
- Application notes
- Application and design sample kits
- Custom product and package development

REQUESTING PRODUCT PLATING

1. If requesting Tin/Lead plated devices, add the suffix " TIN/LEAD" to the part number when ordering (example: 2N2222A TIN/LEAD).
2. If requesting Lead (Pb) Free plated devices, add the suffix " PBFREE" to the part number when ordering (example: 2N2222A PBFREE).

CONTACT US

Corporate Headquarters & Customer Support Team

Central Semiconductor Corp.
145 Adams Avenue
Hauppauge, NY 11788 USA
Main Tel: (631) 435-1110
Main Fax: (631) 435-1824
Support Team Fax: (631) 435-3388
www.centrasemi.com

Worldwide Field Representatives:
www.centrasemi.com/wwreps

Worldwide Distributors:
www.centrasemi.com/wwdistributors

For the latest version of Central Semiconductor's **LIMITATIONS AND DAMAGES DISCLAIMER**, which is part of Central's Standard Terms and Conditions of sale, visit: www.centrasemi.com/terms