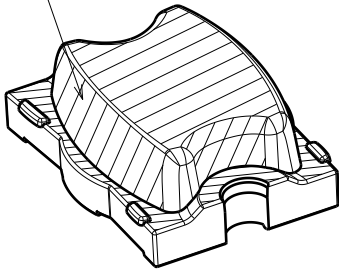


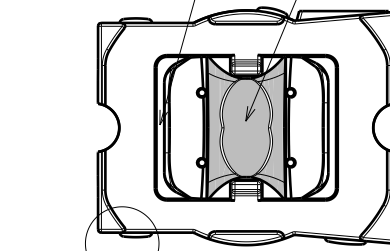
Hatched top areas:
VDI26 with texture polishing

Marking: 1185/0924

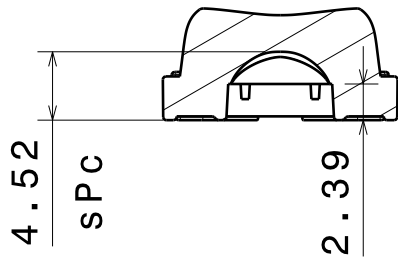
Coloured area:
VDI12 with texture polishing



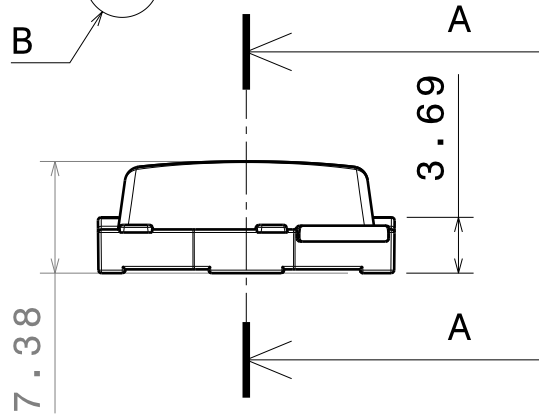
Isometric view



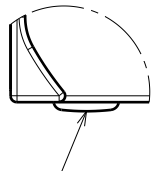
Bottom view



Section view A-A

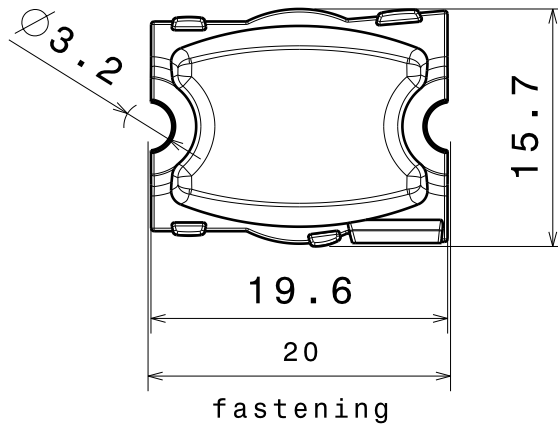


Front view



Detail B

Clips for optional
glare reflector



Top view

Material: PMMA

Tolerances:

Dimensions +/- 0,1 if not otherwise shown.

Control for SPC marked dimensions.

This drawing is our property.
It can't be reproduced
or communicated without
our written agreement.

LEDIL

Ledil Oy
Tehdaskatu 13
FIN-24100 SALO
Finland

DRAWING TITLE

Drawing Strada-DN-XR

DRAWN BY

pv

DATE

09.10.2009

CHECKED BY

tk

DATE

07.10.2009

DESIGNED BY

hh

DATE

07.10.2009

SIZE

A4

DRAWING NUMBER

C11185

REV

1

SCALE

2:1

WEIGHT (g)

SHEET

1 / 1