

PSoc® 4 L-SERIES PIONEER KIT

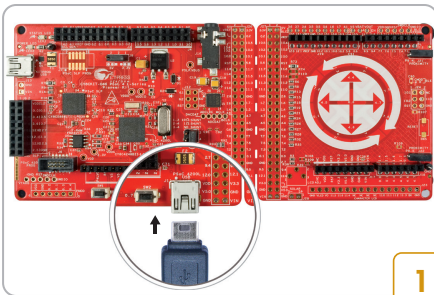


Kit Contents:

- 1 PSoc® 4 L-Series Pioneer board
- 2 USB Standard-A to Mini-B cable
- 3 Four jumper wires (4 inches each)
- 4 Two proximity sensor wires (5 inches each)
- 5 Stereo audio earphone with microphone
- 6 Quick Start Guide (this document)

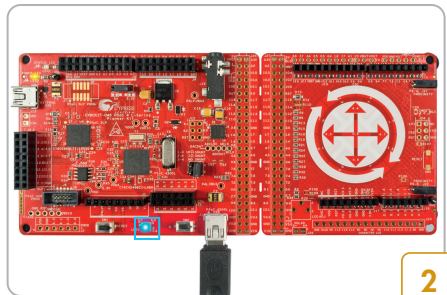


www.cypress.com/CY8CKIT-046



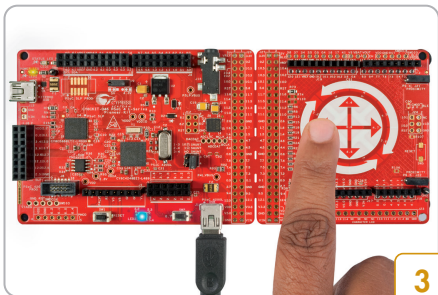
1

- Connect the board to your PC using the provided USB cable through PSoC 4200L USB connector J11

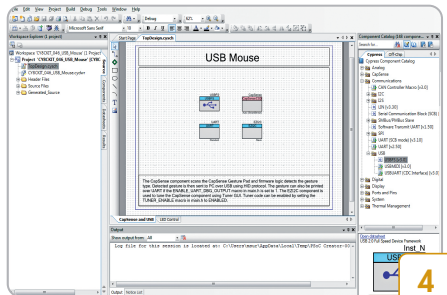


2

- The board will enumerate as a USB composite device (HID mouse and keyboard)
- Wait for the driver installation to complete. Blue LED turns on indicating successful driver installation



3



4

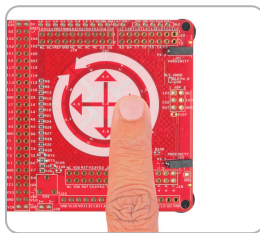
- Control the mouse pointer and buttons using the CapSense® Gesture Pad (operating as a joystick)
- Note: Refer to **USB Mouse** example in the Kit Guide for details on various gestures supported by the CapSense Gesture Pad (joystick)

- Download and install the PSoC Creator™ IDE, PSoC 4 L-Series Pioneer Kit code examples, documents and hardware design files from www.cypress.com/CY8CKIT-046

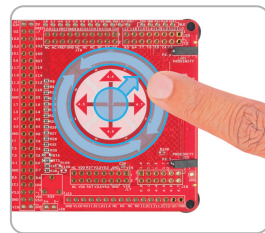
Supported actions



Left-click



Right-click



Mouse pointer (joystick) control

Additional Learning Resources

PSoC Creator:
www.cypress.com/PSOCCreator

AN79953 – Getting Started with PSoC 4:
www.cypress.com/AN79953

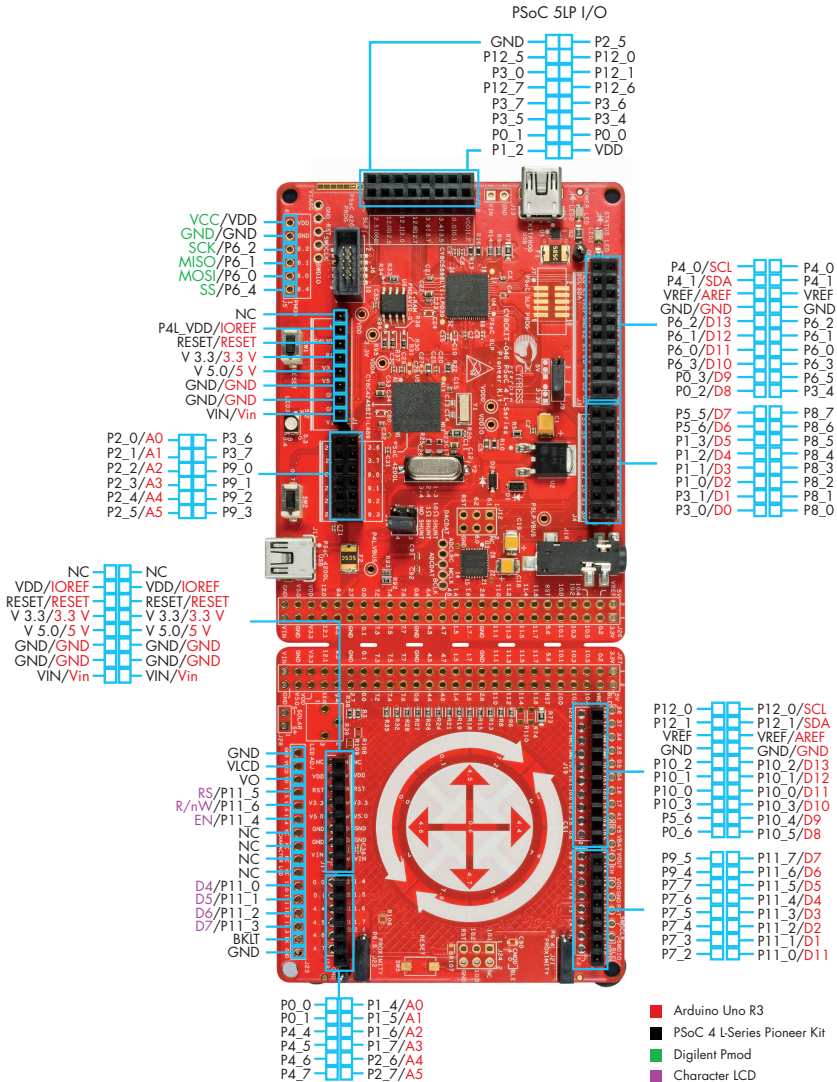
AN73854 – PSoC 3, PSoC 4, and PSoC 5LP Introduction to Bootloaders:
www.cypress.com/AN73854

AN84858 – PSoC 4 and PSoC Analog Coprocessor Programming Using an External Microcontroller (HSSP):
www.cypress.com/AN84858

AN85951 – PSoC 4 and PSoC 6 MCU CapSense Design Guide
www.cypress.com/AN85951

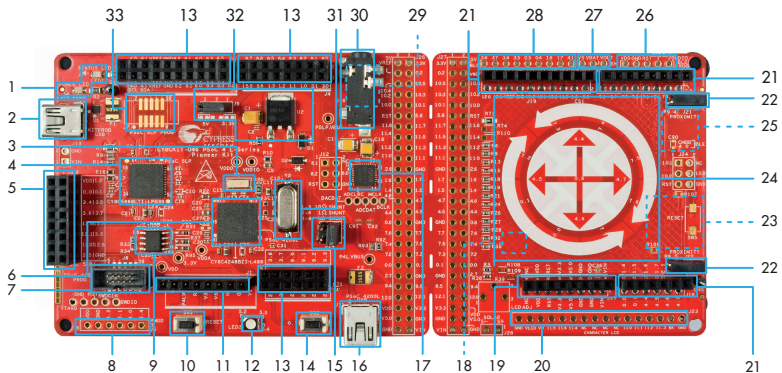
PSoC Code Examples:
www.cypress.com/CodeExamples

PSoC 4 L-Series Pioneer Board Details



PSoC® 4 L-SERIES PIONEER KIT

PSoC 4 L-Series Pioneer Board Details



- | | |
|---|--|
| 1. Power (LED2) and Status (LED1) LEDs | 17. Audio CODEC (WM8731CLSEFL, U3) |
| 2. KitProg USB connector (J10) | 18. Cypress Energy Harvesting PMIC (S6AE101A, U12)* |
| 3. 32.768 kHz crystal (Y1) | 19. Arduino compatible shield board power header (J17) |
| 4. PSoC 5LP programmer and debugger (CY8C5868LTI-LP039, U4) | 20. Character LCD header (J23)* |
| 5. PSoC 5LP I/O header (J8) | 21. Arduino compatible shield board I/O headers (J18/J19/J20) |
| 6. PSoC 4200L (CY8C4248BZH-L489, U5) | 22. CapSense Proximity headers (J21, J22) |
| 7. PSoC 4200L program and debug header (J6) | 23. μ SD card interface (J25) and Cypress Serial NOR Flash (S25FL512S, U13)* |
| 8. Digilent® Pmod™ compatible I/O header (J5)* | 24. CapSense® Gesture Pad |
| 9. Cypress F-RAM 1 Mb (FM24V10-G, U6) | 25. EZ-BLE™ ProC™ Module (CYBLE-022001-00, U8)* |
| 10. PSoC 4200L reset button (SW1) | 26. EZ-BLE Programming header (BLE PROG)* |
| 11. Arduino™ compatible main board power header (J1) | 27. Energy Harvesting PMIC header (EH)* |
| 12. RGB LED (LED3) | 28. EZ-BLE I/O header (BLE)* |
| 13. Arduino compatible main board I/O headers (J2/J3/J4) | 29. Audio jack selection (AHJ/OMTP) switch (SW4)* |
| 14. User button (SW2) | 30. Audio jack - 3.5 mm (J16) |
| 15. PSoC 4200L current measurement jumper (J14) | 31. 17.2032 MHz crystal (Y2) |
| 16. PSoC 4200L USB connector (J11) | 32. System power selection jumper (J9) and LDO (3.3V, U2) |
| | 33. PSoC 5LP program and debug header (J7)* |

*Footprint only, not populated on the board

For the latest information about this kit, visit www.cypress.com/CY8CKIT-046