

## SW-005

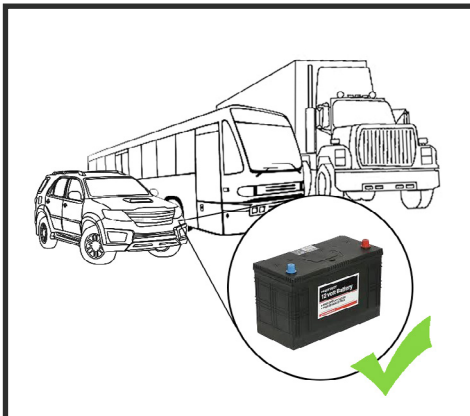
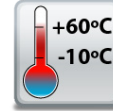
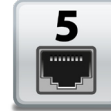
## 5 Port Ethernet Switch 10/100

5 Port Unmanaged Ethernet Switch Wall Mountable

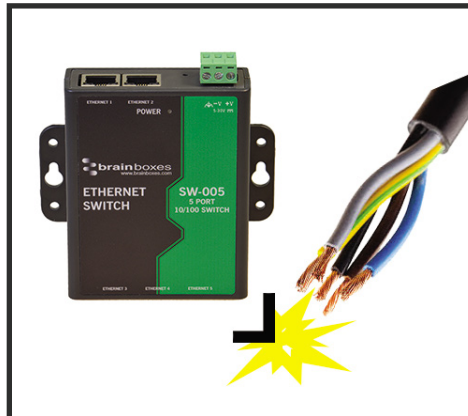
- 5 Port 10/100 Mbs Ethernet Switch
- Power inputs: +5V to +30V DC
- Compact design with integral wall mount
- No software required - Simply plug in and connect
- Integral wall mount or optional DIN rail mount
- -10°C to +60°C/+14°F to +140°F temperature range



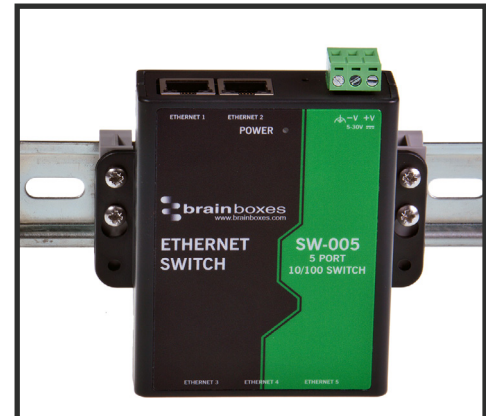
Complies with  
UL 60950-1  
CSA C22.2  
No. 60950-1



+5 to +30 Volt Power Input enables the device to be run from a standard car battery - ideal for in vehicle applications



Non conducting polyamide casing prevents electrical conduction - for safer installation



Integral wall mount option can be used with MK-048 clips to allow DIN rail mounting



## SW-005

## 5 Port Ethernet Switch 10/100

No software needed: Simply plug in any ethernet cable

All Ethernet ports are Auto MDI/MDIX supporting straight through or crossover Ethernet cables

Automatic detection of data transmission speed: 10 or 100 MBps  
 2k Byte maximum packet size – improves the efficiency of bulk data transfer and system performance

Broadcast Storm protection



Easy Wire Removable screw terminal block

Wide Range Input Power: +5VDC to +30VDC

Power consumption is optimised based on the status of the link device

Wall mount holes compatible with MK-048 DIN mount clips

IP30 Non-conducting polyamide case

-10°C to +60°C/+14°F to +140°F temperature range

### Connectors

Screw Terminals

3 way x 0.2inch/5.08mm pitch power supply

Wire Thickness

0.150 inch, 3.81mm, 20 pins, 12+8 screw terminals, #26 - #16 AWG, 0.14mm<sup>2</sup>-1.3mm<sup>2</sup>

### Power Supply

Power Consumption

1.1 Watts Max : 220 mAmps@+5VDC/36mAmps@+30VDC

Power Supply input

Unregulated +5V to +30Volts DC, reverse polarity protection

Isolation

1500VRMS Magnetic isolation from Ethernet

### Environmental

Operating Temperature

-10°C to +60°C / +14°F to +140°F

Storage Temperature

-10°C to +70°C / +14°F to +158°F

Ambient Relative Humidity

5 to 95% (non-condensing)

### Magjack LED Information

Link/Activity LED

Solid green	Connection established
Flashing Green	Data communication

Speed LED

Green	100Base-Tx
Unlit	10Base-T

### Ethernet

Ethernet Port

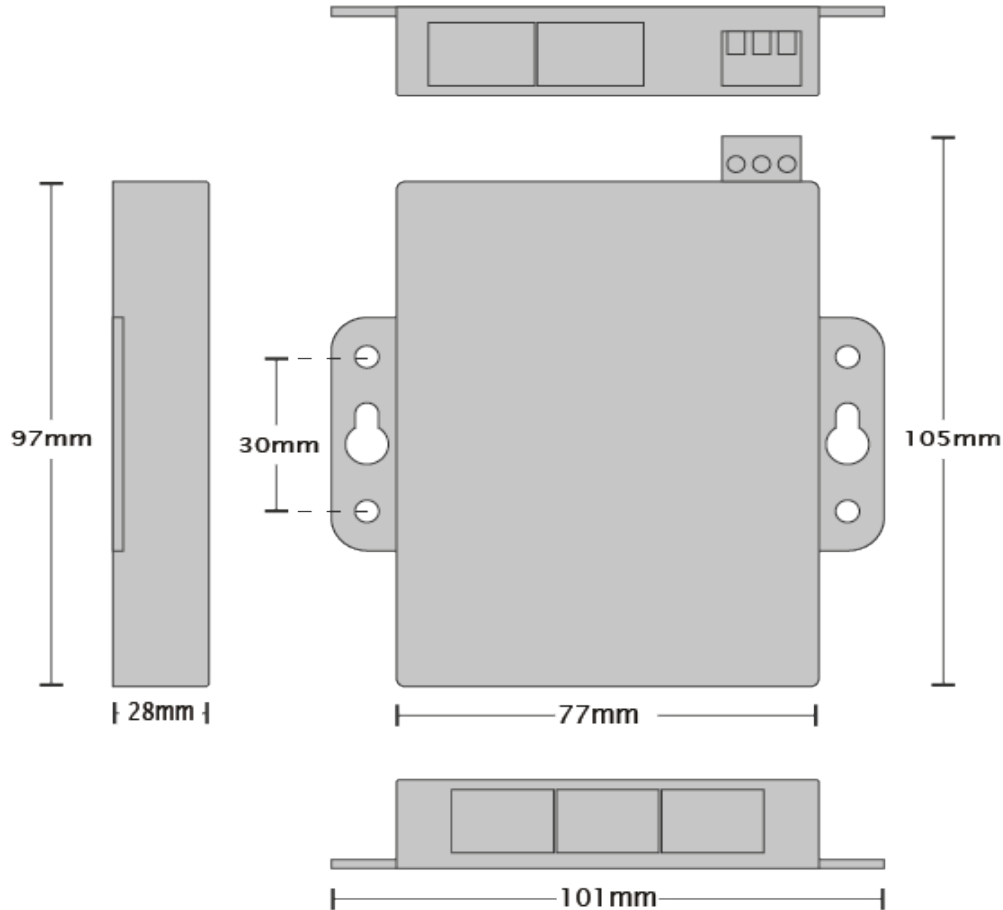
5 x RJ45 jack, 10/100Mhz autosensing, crossover auto sensing (Auto MDIX)

Protection

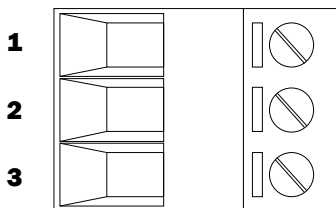
1,500 Volts magnetic isolation between ports

Housing

IP-30 rated non-conducting polyamide case

**SW-005**
**5 Port Ethernet Switch 10/100**

**Power Terminal Pin Outs**

PIN	FUNCTION
1	+V Power
2	-V Power
3	Functional Earth


**Ethernet Ports x4 Pin Outs**

PIN	FUNCTION
1	RD+ / TD+
2	RD- / TD-
3	TD+ / RD+
4	NC
5	NC
6	TD- / RD-
7	NC
8	NC

**Lifetime Warranty and Support:**

We can help with every aspect of your project, from getting you up and running to custom application.

## SW-005

## 5 Port Ethernet Switch 10/100

### Product Information

Product Weight	0.134 kg, 4.73 ounces
Product Dimensions	107x102x28 mm, 4.2x4.0x1.1 inches

### Packaging Information

Packaging	Quick Start Guide
Device	Ethernet Switch 5 port
Packaged Weight	0.221 kg, 7.79 ounces
Packaged Dims	160x135x49 mm, 6.3x5.3x1.9 inches
GTIN Universal Code	837324009866

### Approvals

Industry Approvals	Microsoft Certified Gold Partner, WEEE, RoHS, AEO (C-TPAT), CE, METL Complies with UL 60950-1, UKCA
--------------------	--

### Product Support

Warranty	Lifetime - online registration required
Support	Lifetime Web, Email and Phone Support from fully qualified, friendly staff who work in and alongside the Product Development Team

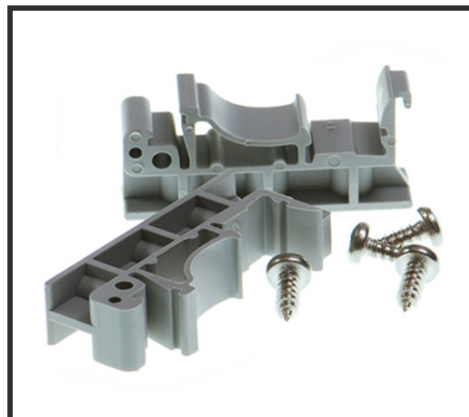
### Additional Information

OEM option	Available for bulk buy OEM
Made In	Manufactured in the UK by Brainboxes Winner 2005 European Electronics Industry Awards 'Manufacturer of the Year'
Customisable	Brainboxes operate a 'Perfect Fit Custom Design' policy for volume users. More info:sales@brainboxes.com



### PW-600

Power supply with connectors for UK, USA, EU and AUS mains socket. 'Tails' are suitable for connecting to screw terminal blocks.



### MK-048

DIN Rail Mounting Kit Suitable for attaching to SW-005 to make device clip on to a DIN rail.



### SW Range

Switch products available in a range of formats and specifications.

[www.brainboxes.com](http://www.brainboxes.com)