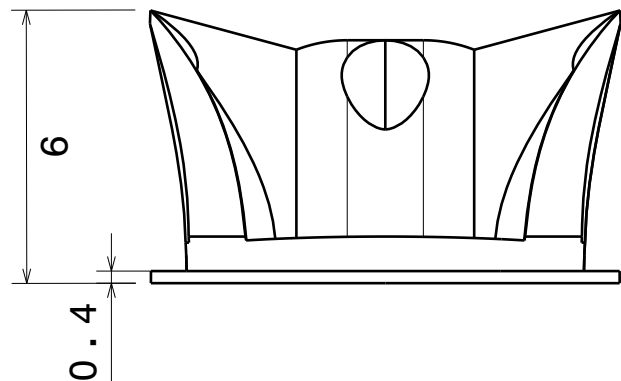
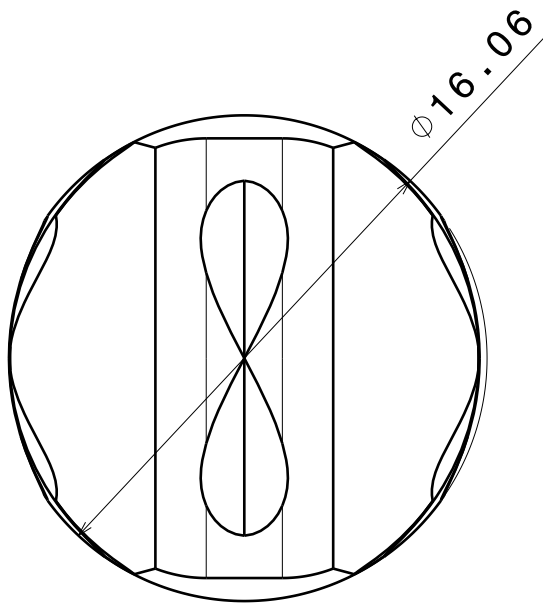


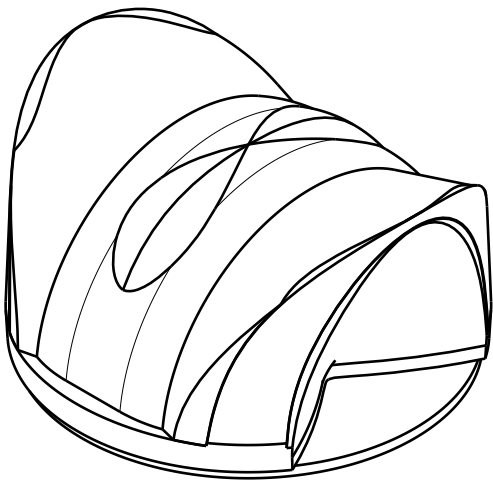
Bottom view



Front view



Top view



Isometric view

CA12764_FLARE-MINI-A
COMPONENTS

INDEX	PART	TYPE	MATERIAL	COLOR / COATING
1	C12763_FLARE-MINI-A	LENS	PMMA	CLEAR
2	C14480_TINA-TAPE3	TAPE	SCAPA	BLACK

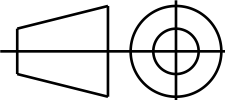
MECHANICAL DRAWING

PRODUCT

FLARE-MINI

Plastic moulding general tolerances according to DIN 16901-130 and applies if not otherwise shown in the drawing.
Silicone moulding general tolerances according to ISO 3302-1 Class M3 and applies if not otherwise shown in the drawing.

FIRST ANGLE PROJECTION:



This drawing is the property of LEDiL Oy. It may not be copied or otherwise distributed without prior written permission from LEDiL Oy.

SCALE 4:1

WEIGHT -

A3 SHEET 1/1

Notes

PCB or heatsink level.
LED location
Ensure LED fitting from a product specific 3D model available from www.ledil.com
For more details about installation please see LEDiL Installation Guide on www.ledil.com