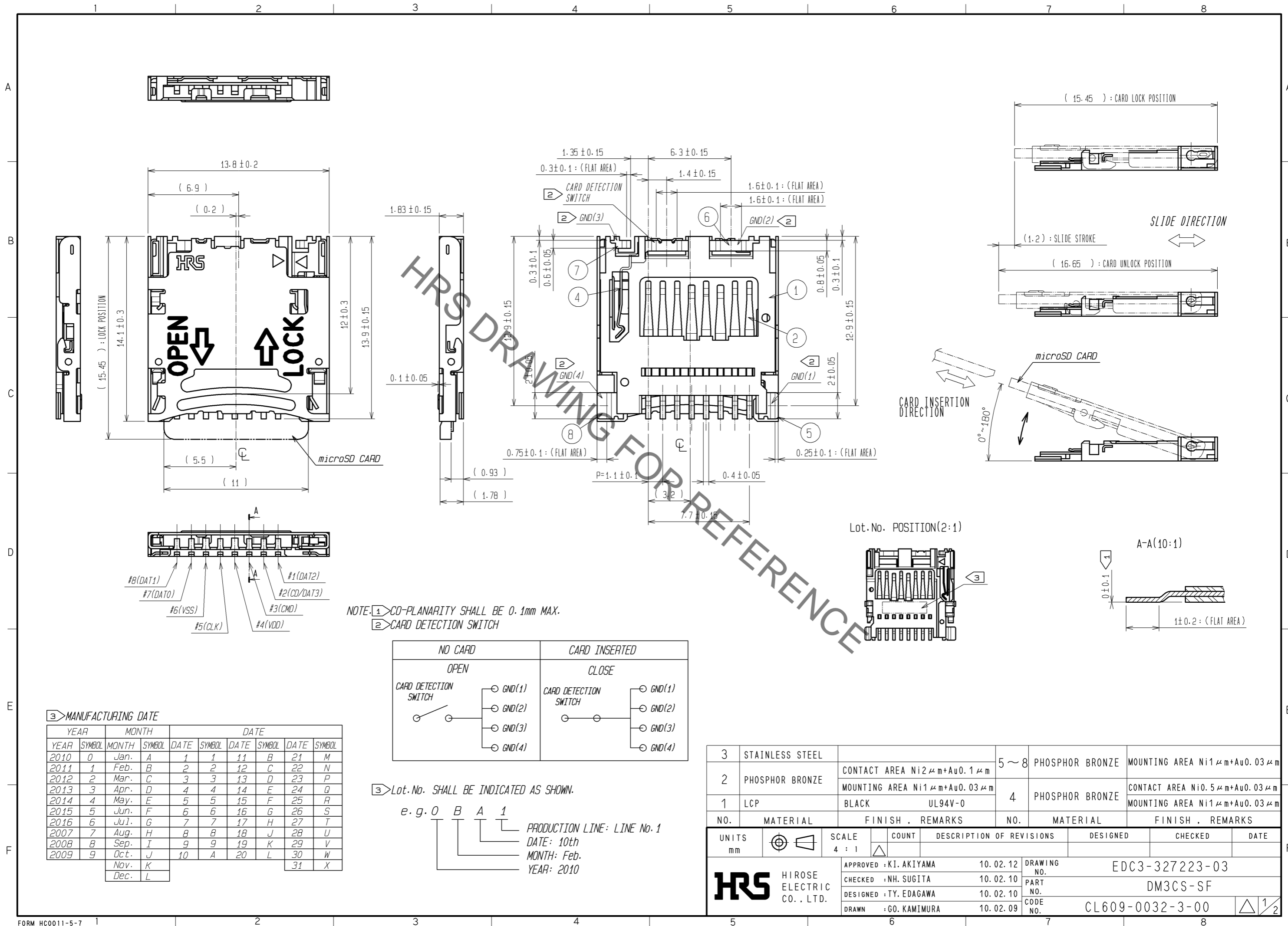
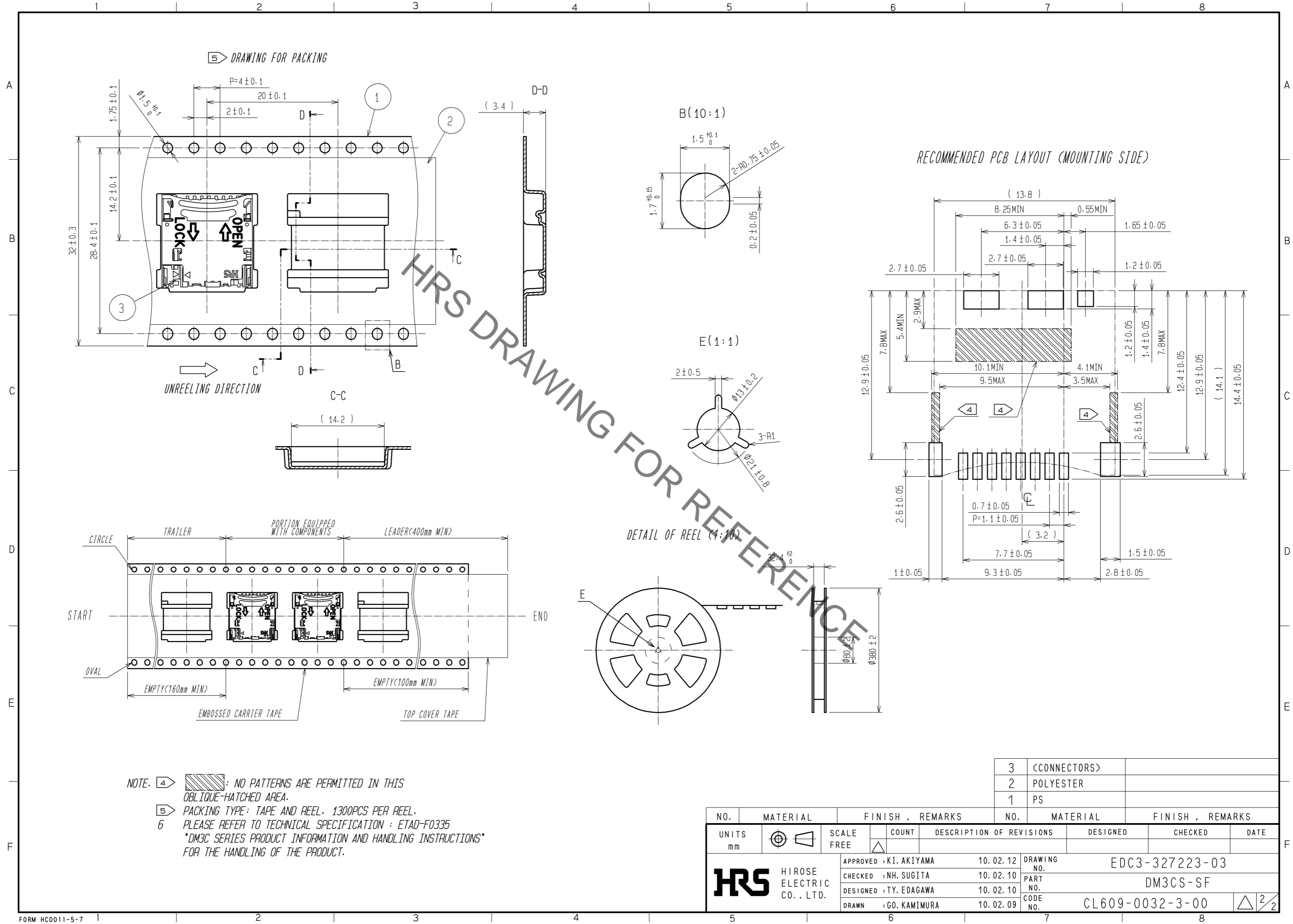


Sep.1.2020 Copyright 2020 HIROSE ELECTRIC CO., LTD. All Rights Reserved.
In case of consideration for using Automotive equipment / device which demand high reliability, kindly contact our sales window correspondents.



Sep.1.2020 Copyright 2020 HIROSE ELECTRIC CO., LTD. All Rights Reserved.
 In case of consideration for using Automotive equipment / device which demand high reliability, kindly contact our sales window correspondents.



NOTE. 4 : NO PATTERNS ARE PERMITTED IN THIS OBLIQUE-HATCHED AREA.
5 PACKING TYPE: TAPE AND REEL. 1300PCS PER REEL.
6 PLEASE REFER TO TECHNICAL SPECIFICATION : ETAD-F0335
 DM3C SERIES PRODUCT INFORMATION AND HANDLING INSTRUCTIONS
 FOR THE HANDLING OF THE PRODUCT.

NO.	MATERIAL	FINISH . REMARKS	NO.	MATERIAL	FINISH . REMARKS
3	(CONNECTORS)				
2	POLYESTER				
1	PS				

UNITS	SCALE	COUNT	DESCRIPTION OF REVISIONS	DESIGNED	CHECKED	DATE
mm	FREE	△				
APPROVED : KI. AKIYAMA			10.02.12	DRAWING NO. EDC3-327223-03		
CHECKED : NH. SUGITA			10.02.10	PART NO. DM3CS-SF		
DESIGNED : TY. EDAGAWA			10.02.10	CODE NO. CL609-0032-3-00		
DRAWN : GO. KAMIMURA			10.02.09	△ 2/2		

Mouser Electronics

Authorized Distributor

Click to View Pricing, Inventory, Delivery & Lifecycle Information:

[Hirose Electric:](#)

[DM3CS-SF](#)