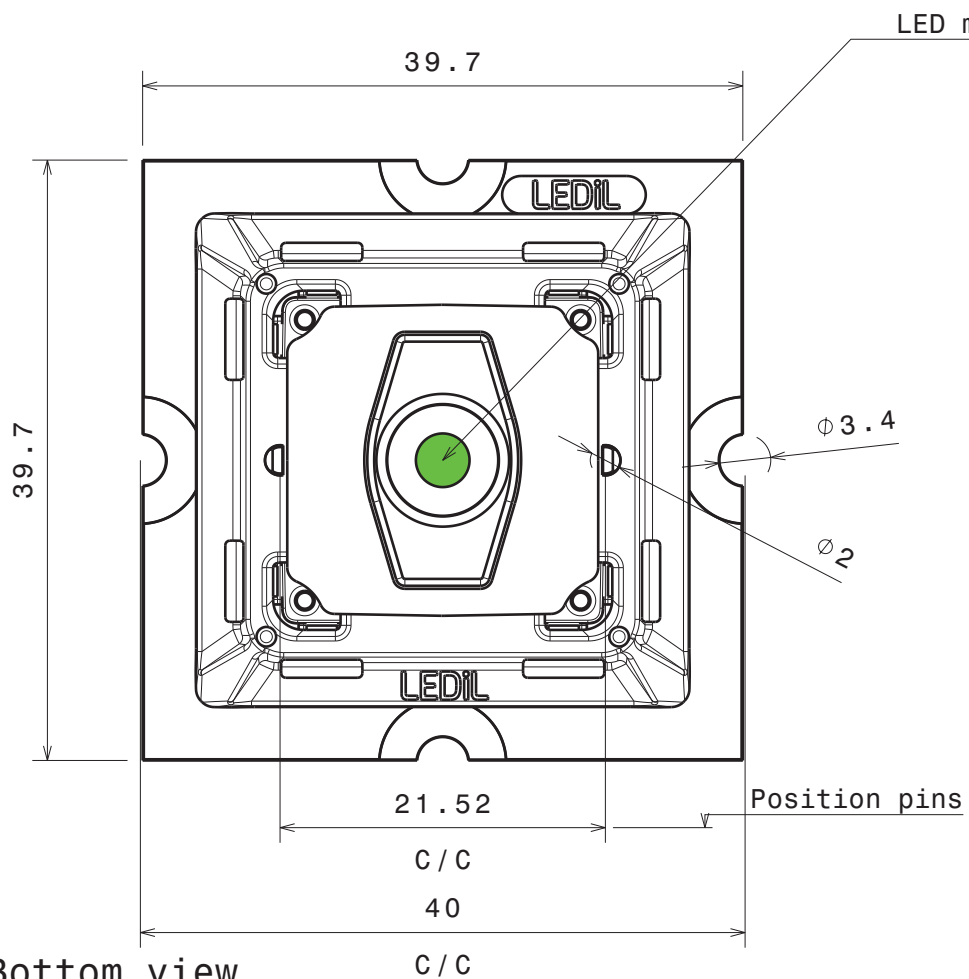
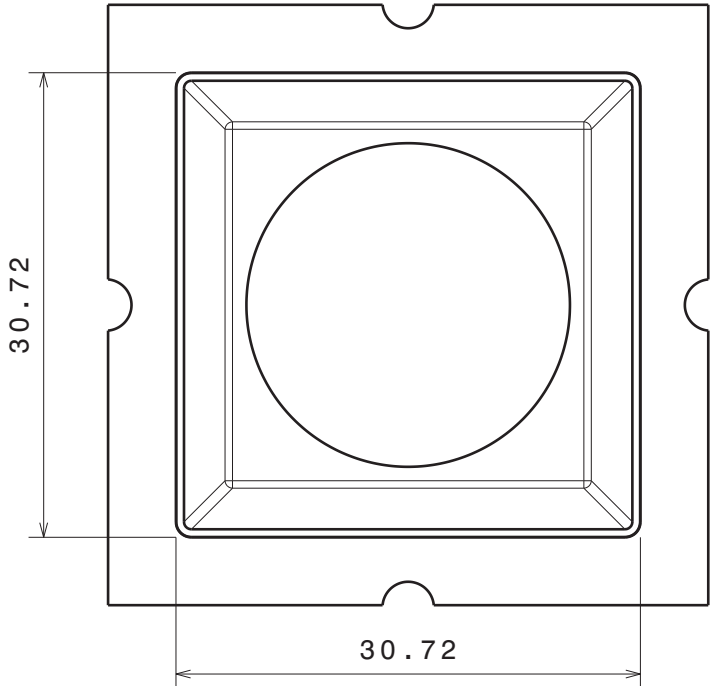


H G F E D C B A

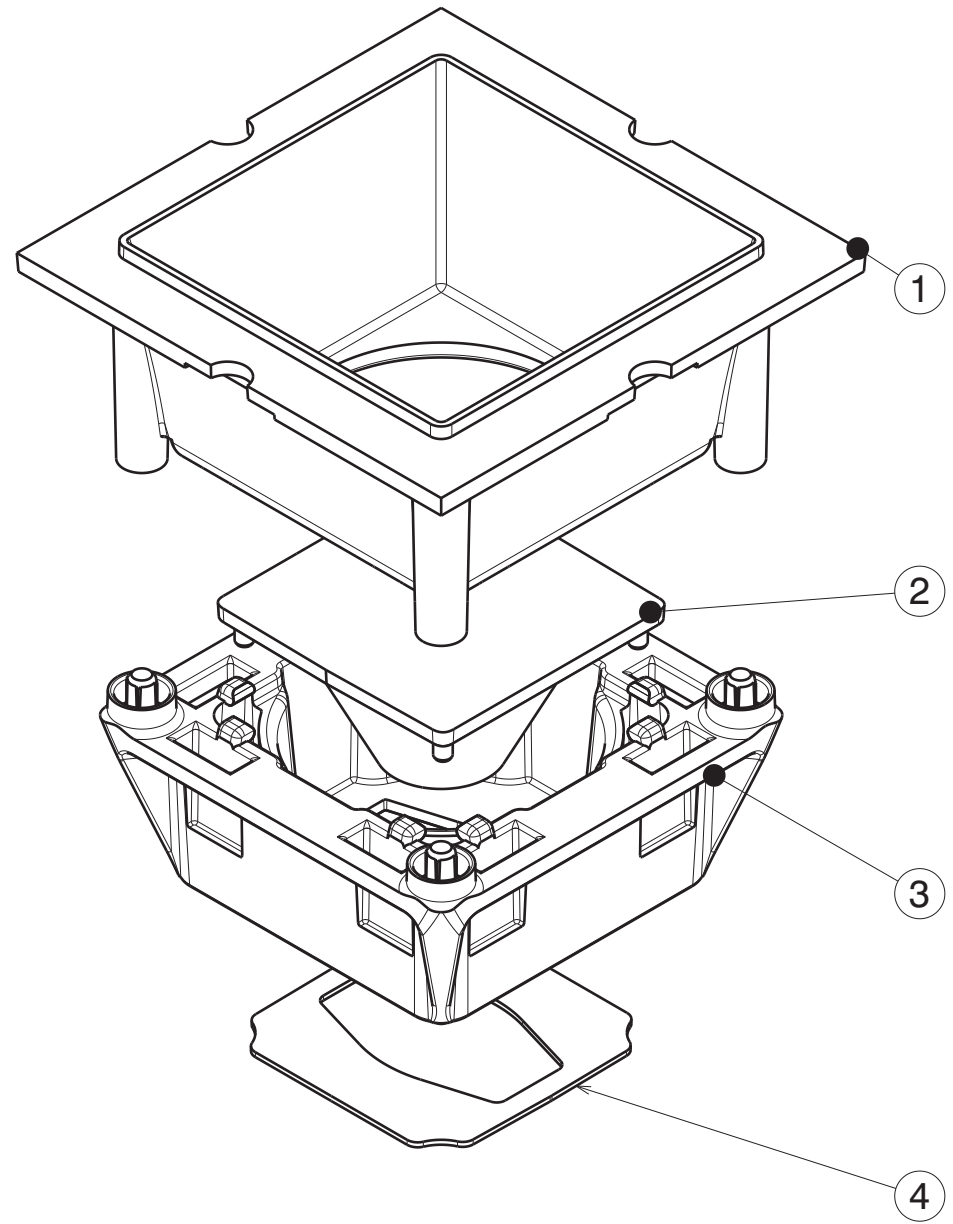
4



Bottom view
Scale: 2:1

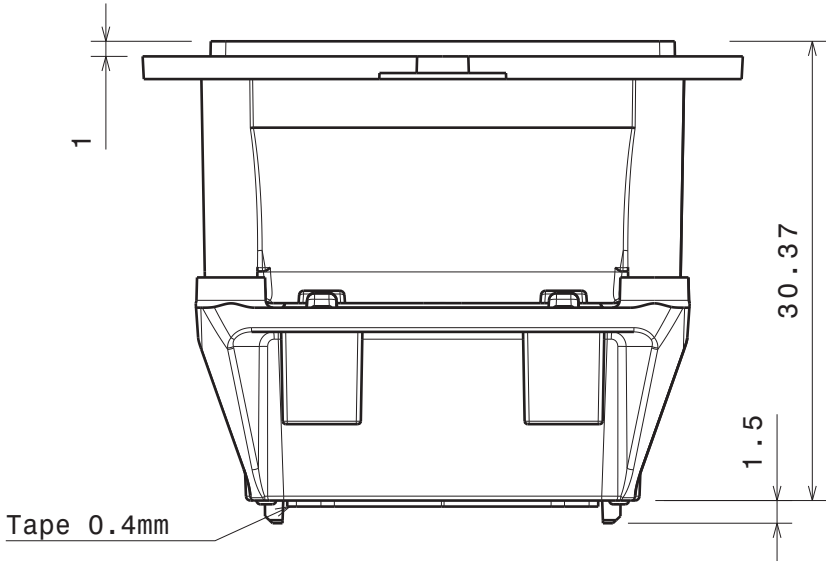


Top view
Scale: 2:1



3

2



Front view
Scale: 2:1

Assembly:

1. Press holder firmly five seconds (with lenses assembled) to PCB. Inspect that the positioning pins are securely in their holes.
2. Press the shade firmly down on the holder until they are securely attached.

Tolerances if not otherwise shown
According to DIN ISO 2768-1
Linear measures:
Up to 30mm class M, otherwise class C.
According to DIN ISO 2768-2
Form and position: class L

	Ledil Oy Salorankatu 10 FIN 24240 SALO Finland
	DRAWING TITLE Florentina-1-MRK assembly

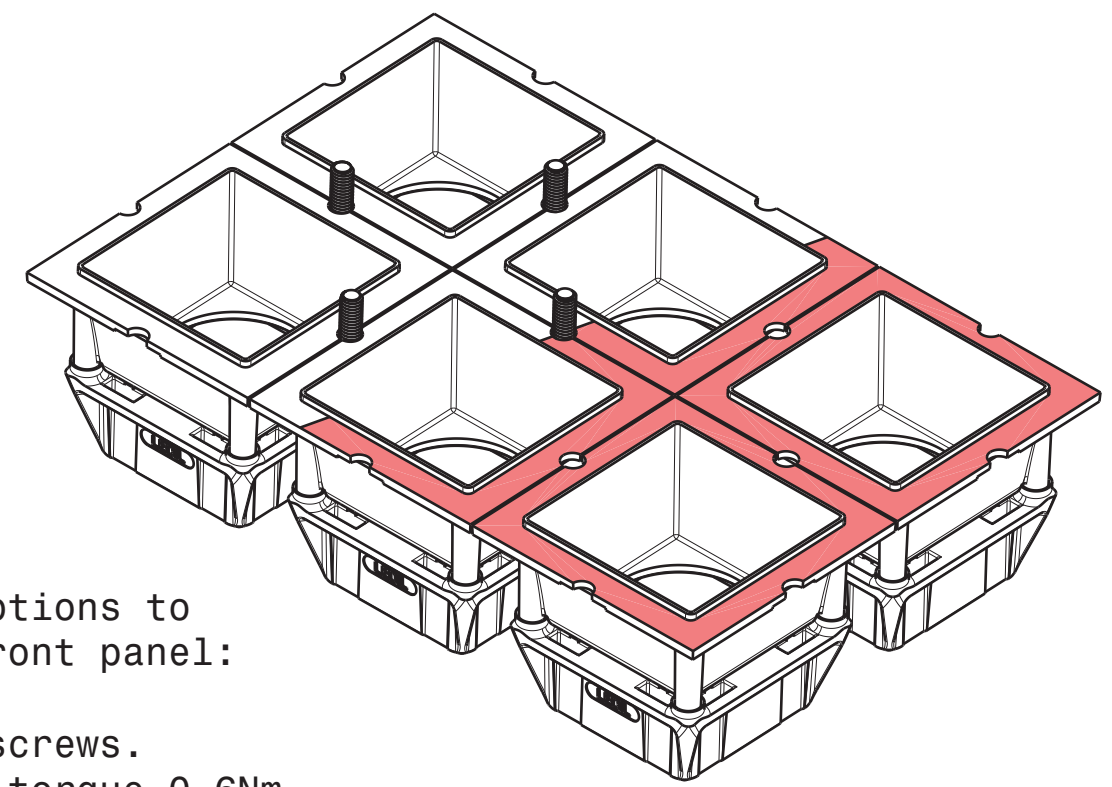
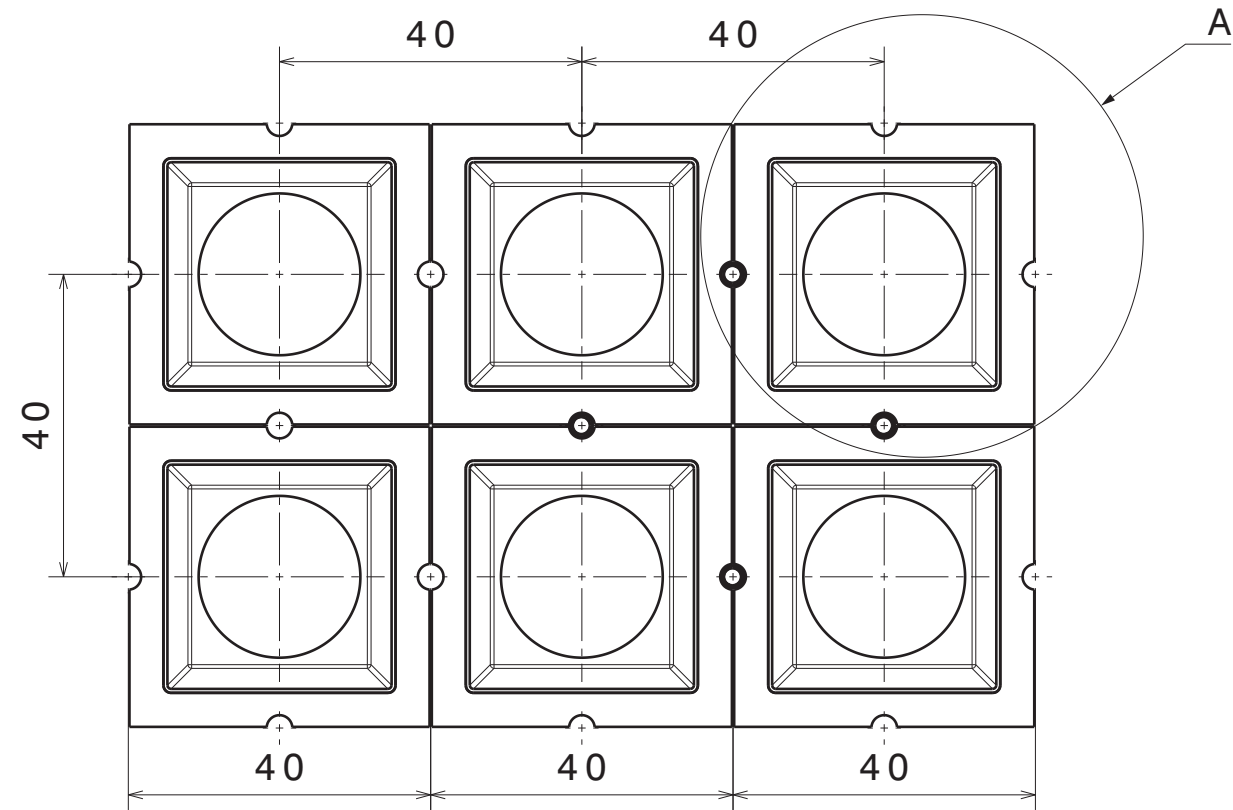
THIRD ANGLE PROJECTION:

This drawing is the property of LEDiL Oy. It may not be reproduced, copied or communicated without a written agreement with LEDiL Oy.

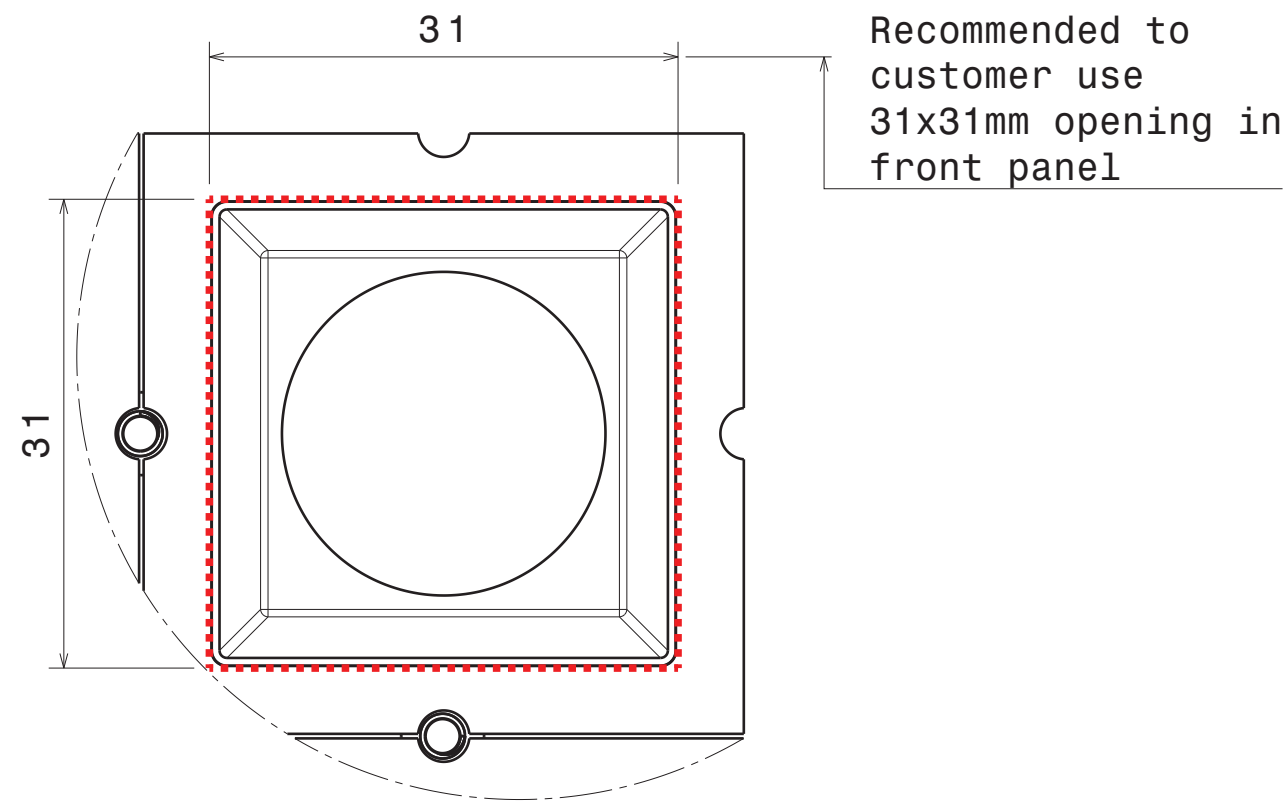
SIZE	PART NUMBER		
A3	-		
SCALE	2:1	WEIGHT	-
SHEET		1/1	

INDEX	PART NO	DESCRIPTION	MATERIAL	COLOUR
1		FLORENTINA-1-SHD	PC	black
2		Rose-MRK series	PC	clear
3	C15426	FLORENTINA-1-HLD	PC	black
4	C10278	ROSE-TAPE	PU 2-sided adhesive foam tape	

H G F E D C B A



Fastening options to customer's front panel:
 Glue or M3 screws.
 Recommended torque 0.6Nm.



Recommended to customer use 31x31mm opening in front panel

Tolerances if not otherwise shown According to DIN ISO 2768-1 Linear measures: Up to 30mm class M, otherwise class C. According to DIN ISO 2768-2 Form and position: class L		LEDiL Ledil Oy Salorankatu 10 FIN 24240 SALO Finland	
THIRD ANGLE PROJECTION:		DRAWING TITLE Florentina-1 assembly	
This drawing is the property of LEDiL Oy. It may not be reproduced, copied or communicated without a written agreement with LEDiL Oy.		SIZE A3	PART NUMBER -
SCALE 2:1	WEIGHT -	SHEET 1/1	