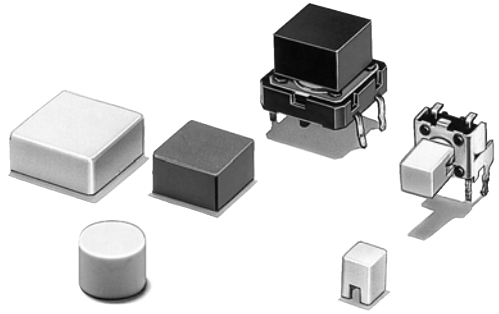


Key Top Designed Specially for Projected-plunger-type B3F and B3W Switches

- ROHS compliant.
- Available in a wide range of colors and sizes.



Ordering Information

For B3F and B3W Switches

New

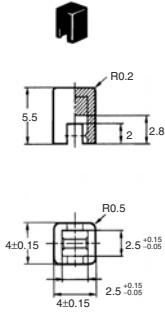
| Colour | 6 x 6 mm Switches B3F-1000, B3F-3000, B3W-1000, B3FS) | | | 12 x 12 mm Switches (B3F-4000, B3F-5000, B3W-4000) | | |
|------------|---|-----------|----------|--|--------------------|-------------|
| | 4 x 4 mm Key Top | 6 mm dia. | D shape | 9 x 9 mm Key Top | 12 x 12 mm Key Top | 9.5-mm dia. |
| Light Grey | B32-1000 | B32-2000 | B32-2100 | B32-1200 | B32-1300 | B32-1600 |
| Black | B32-1010 | B32-2010 | B32-2110 | B32-1210 | B32-1310 | B32-1610 |
| Orange | B32-1020 | - | - | B32-1220 | B32-1320 | B32-1620 |
| Yellow | B32-1030 | - | - | B32-1230 | B32-1330 | B32-1630 |
| Blue | B32-1040 | - | - | B32-1240 | B32-1340 | - |
| Green | B32-1050 | - | - | B32-1250 | B32-1350 | - |
| White | B32-1060 | - | - | B32-1280 | B32-1380 | - |
| Red | B32-1080 | - | - | B32-1280 | B32-1380 | - |

Tactile Switch Key Top – B32

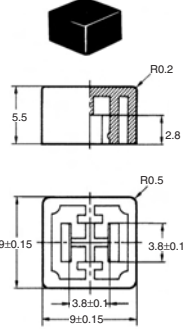
Dimensions

Note: All units are in millimetres unless otherwise indicated. Unless otherwise specified, a tolerance of ± 0.4 mm applies to all dimensions.

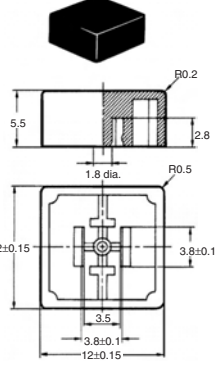
B32-10□□



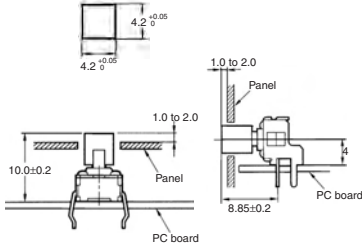
B32-12□□



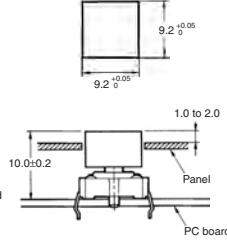
B32-13□□



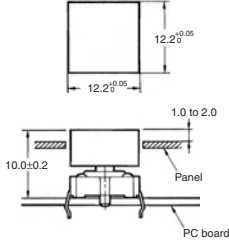
Panel Cutout



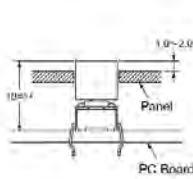
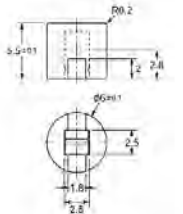
Panel Cutout



Panel Cutout



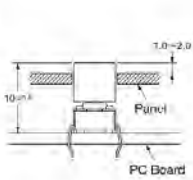
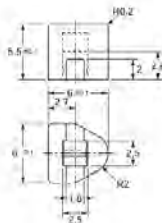
B32-2000
B32-2010



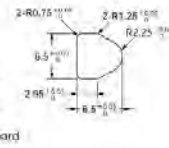
Panel Cutout



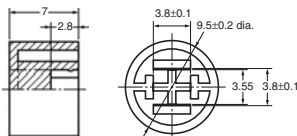
B32-2100
B32-2110



Panel Cutout



B32-16□□



Panel Cutout

