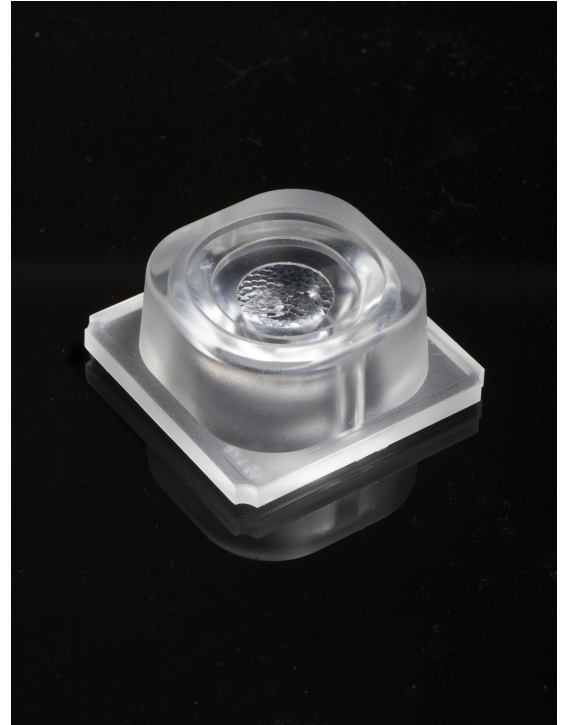


## JENNY-20

~20° beam

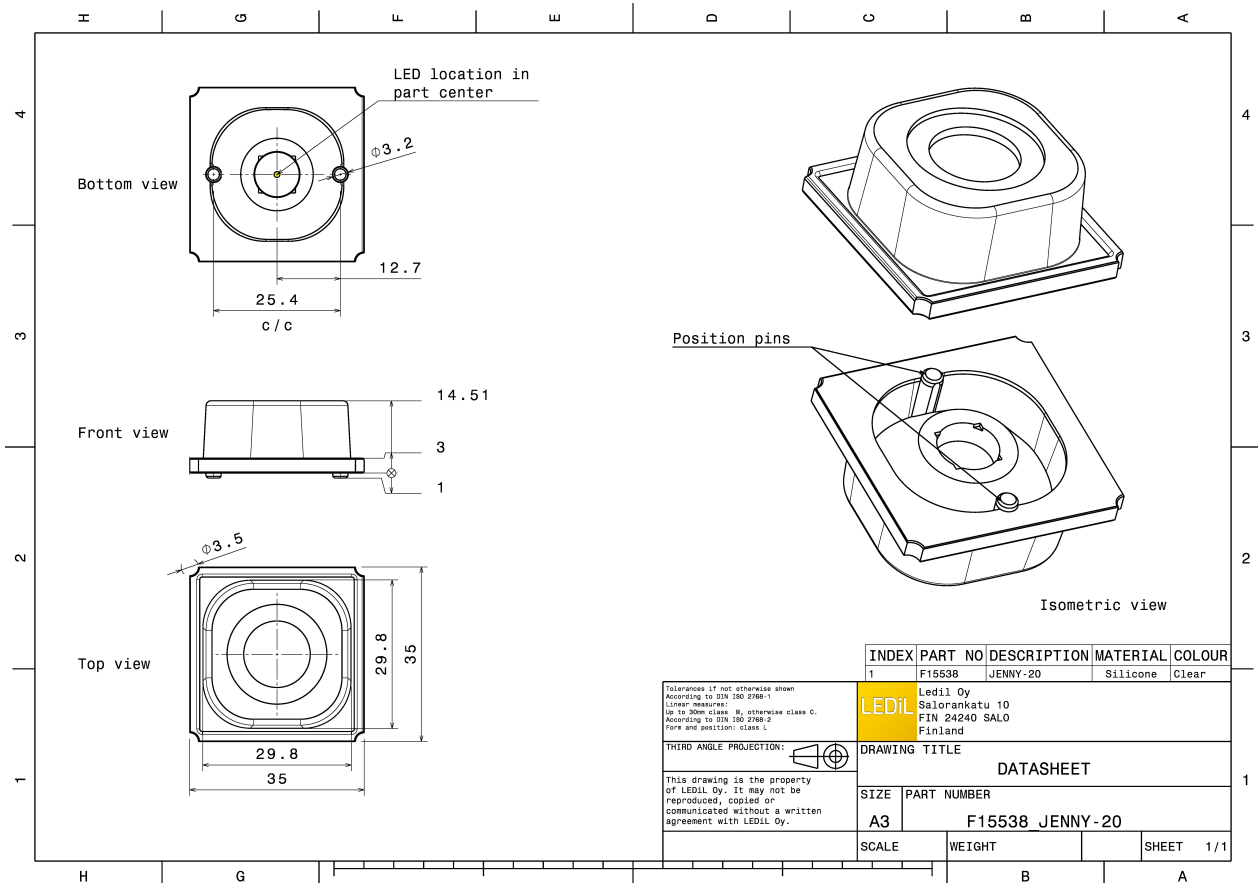
### TECHNICAL SPECIFICATIONS:

Dimensions	35.0 mm
Height	14.5 mm
Fastening	pin
Colour	clear
Box size	480 x 280 x 300 mm
Box weight	10.4 kg
Quantity in Box	1140 pcs
ROHS compliant	yes ⓘ



### MATERIAL SPECIFICATIONS:

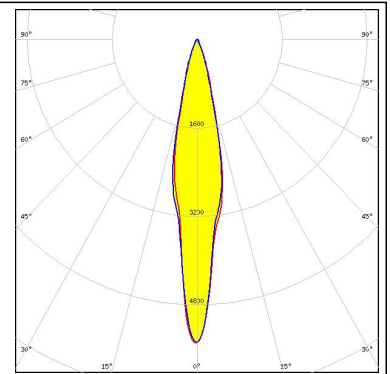
Component	Type	Material	Colour
JENNY-20	Single lens	Silicone	clear



## PHOTOMETRIC DATA (MEASURED):



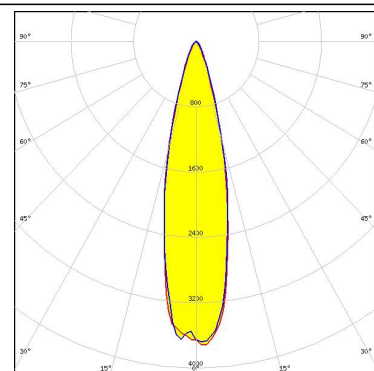
LED LUXEON M/MX  
FWHM 19.0°  
Efficiency 94 %  
Peak intensity 5.500 cd/m  
LEDs/each optic 1  
Light colour White  
Required components:  
C14436\_JENNY-HLD-A-BLK



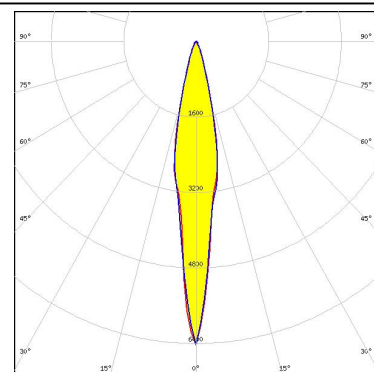
### PHOTOMETRIC DATA (SIMULATED):



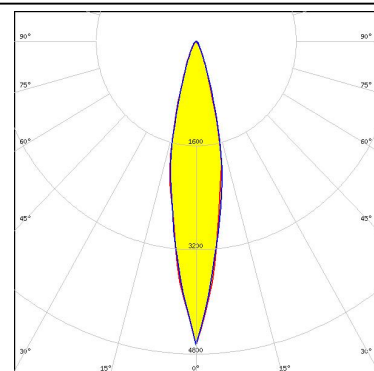
LED MHD-E/G  
FWHM 24.0°  
Efficiency 95 %  
Peak intensity 3.720 cd/lm  
LEDs/each optic 1  
Light colour White  
Required components:



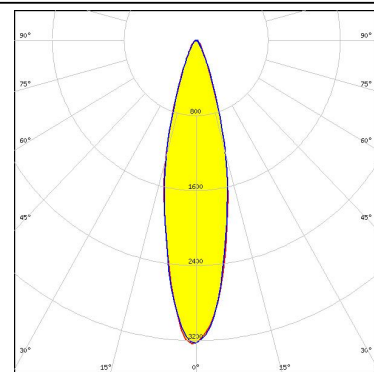
LED MK-R  
FWHM 14.0°  
Efficiency 96 %  
Peak intensity 6.430 cd/lm  
LEDs/each optic 1  
Light colour White  
Required components:



LED XHP70  
FWHM 20.0°  
Efficiency 96 %  
Peak intensity 4.660 cd/lm  
LEDs/each optic 1  
Light colour White  
Required components:



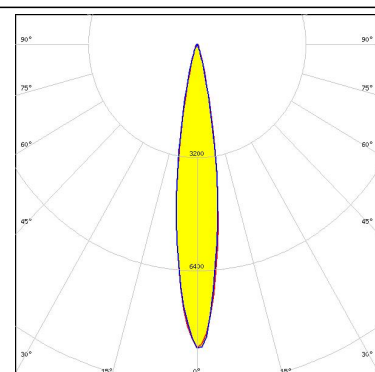
LED XHP70.2  
FWHM 25.0°  
Efficiency 94 %  
Peak intensity 3.250 cd/lm  
LEDs/each optic 1  
Light colour White  
Required components:



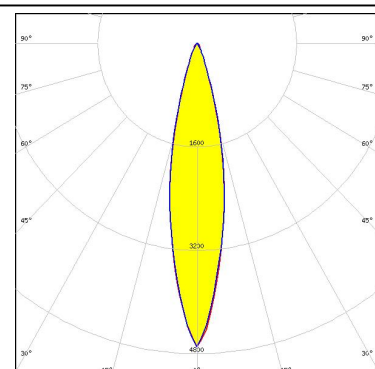
### PHOTOMETRIC DATA (SIMULATED):



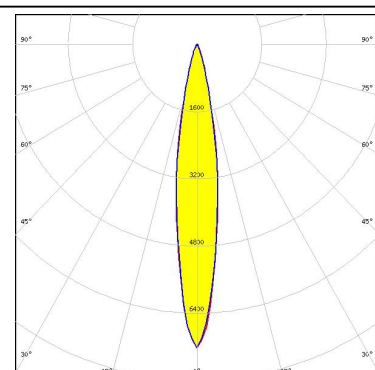
LED LUXEON MZ  
FWHM 17.0°  
Efficiency 94 %  
Peak intensity 8.630 cd/lm  
LEDs/each optic 1  
Light colour White  
Required components:



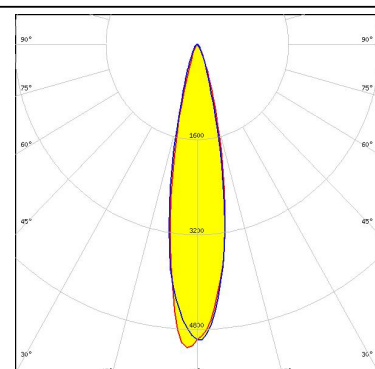
LED NV4x144A  
FWHM 22.0°  
Efficiency 94 %  
Peak intensity 4.690 cd/lm  
LEDs/each optic 1  
Light colour White  
Required components:



LED NVSxE21A  
FWHM 16.0°  
Efficiency 94 %  
Peak intensity 7.200 cd/lm  
LEDs/each optic 4  
Light colour White  
Required components:



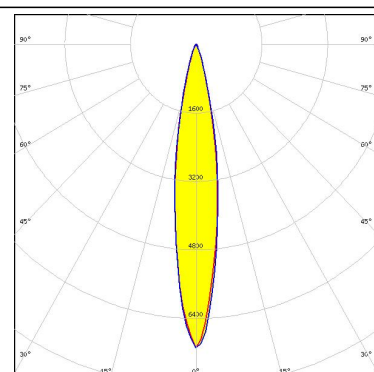
LED Duris S10  
FWHM 21.0°  
Efficiency 96 %  
Peak intensity 5.080 cd/lm  
LEDs/each optic 1  
Light colour White  
Required components:



### PHOTOMETRIC DATA (SIMULATED):

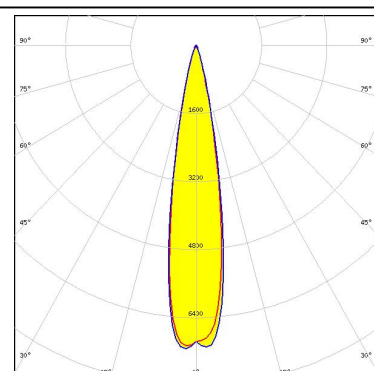
#### OSRAM Opto Semiconductors

LED Duris S8  
FWHM 17.0°  
Efficiency 94 %  
Peak intensity 7.090 cd/lm  
LEDs/each optic 1  
Light colour White  
Required components:



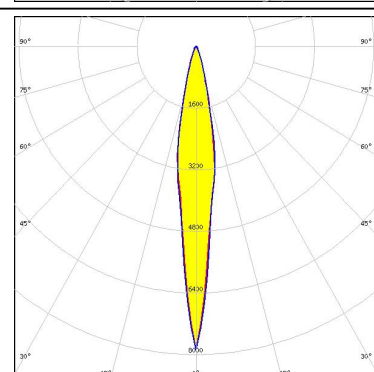
#### OSRAM Opto Semiconductors

LED OSCONIQ P 3737 (2W version)  
FWHM 20.0°  
Efficiency 94 %  
Peak intensity 7.160 cd/lm  
LEDs/each optic 1  
Light colour White  
Required components:



#### OSRAM Opto Semiconductors

LED OSCONIQ P 7070  
FWHM 13.0°  
Efficiency 96 %  
Peak intensity 7.880 cd/lm  
LEDs/each optic 1  
Light colour White  
Required components:



### GENERAL INFORMATION:

NOTE: The typical beam angle will be changed by different color, chip size and chip position tolerance. The typical total beam angle is the full angle measured where the luminous intensity is half of the peak value.

### MATERIALS:

As part of our continuous research and improvement processes, and to ensure the best possible quality and availability of our products, LEDiL reserves the right to change material grades without notice.

### PRODUCT DATA USER AGREEMENT AND DISCLAIMER:

The measured data in the provided downloadable LEDiL Product Datasheets and Mechanical 2D-Drawings is rounded and provided as reference for planning. LEDiL Oy's optical specifications have been verified by conducting performance testing of the products in accordance with the company's quality system. The reported data are averaged results of multiple measurements with typical variation. LEDiL Oy reserves the right to without prior notification make changes and improvements to its products.

LEDiL Oy assumes neither warranty, nor guarantee nor any other liability of any kind for the contents and correctness of the provided data. The provided data has been generated with highest diligence but the provided data may in reality not represent the complete possible variation range of all intrinsic parameters. Therefore, in certain cases a deviation from the provided data could occur.

LEDiL Oy reserves the right to undertake technical changes of its products without further notification which could lead to changes in the provided data. LEDiL Oy assumes no liability of any kind for the possible deviation from any provided data or any other damage resulting from the usage of the provided data.

The user agrees to this disclaimer and user agreement with the download or usage of the provided files.

#### LEDiL Oy

Joensuunkatu 13  
FI-24240 SALO  
Finland

#### LEDiL Inc.

228 West Page Street  
Suite D  
Sycamore IL 60178  
USA

#### Local sales and technical support

[www.ledil.com/  
where\\_to\\_buy](http://www.ledil.com/where_to_buy)

#### Shipping locations

Salo, Finland  
Hong Kong, China

#### Distribution Partners

[www.ledil.com/  
where\\_to\\_buy](http://www.ledil.com/where_to_buy)