

STRADELLA-8-HV-HB-S

~25° spot beam for industrial applications.
Variant with longer distance between location pins allowing high voltage circuit designs.

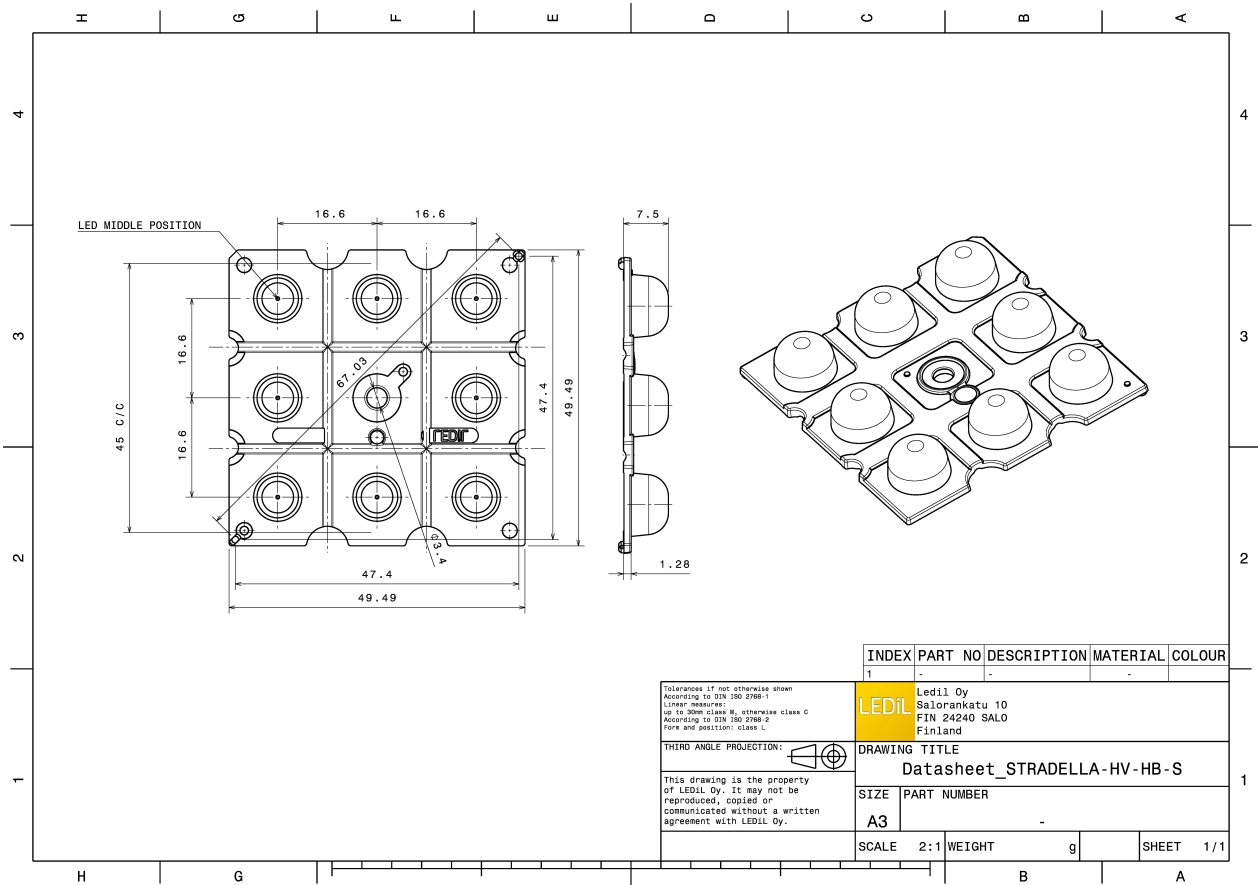
TECHNICAL SPECIFICATIONS:

Dimensions	49.5 mm
Height	7.5 mm
Fastening	screw
Colour	clear
Box size	480 x 280 x 300 mm
Box weight	5 kg
Quantity in Box	800 pcs
ROHS compliant	yes ⓘ



MATERIAL SPECIFICATIONS:

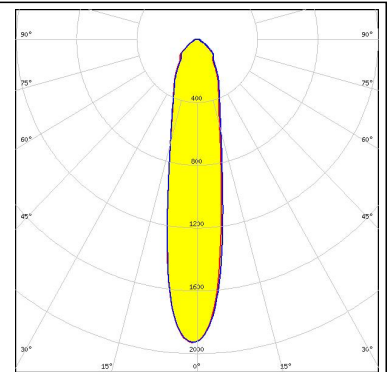
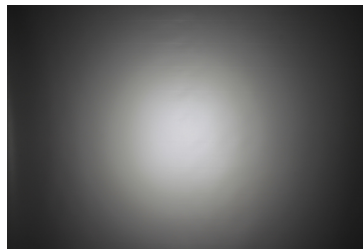
Component	Type	Material	Colour
STRADELLA-8-HV-HB-S	Multi-lens	PMMA	clear



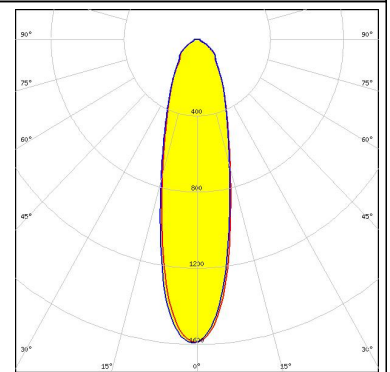
PHOTOMETRIC DATA (MEASURED):



LED XD16
 FWHM 21.0°
 Efficiency 94 %
 Peak intensity 1.900 cd/lm
 LEDs/each optic 1
 Light colour White
 Required components:

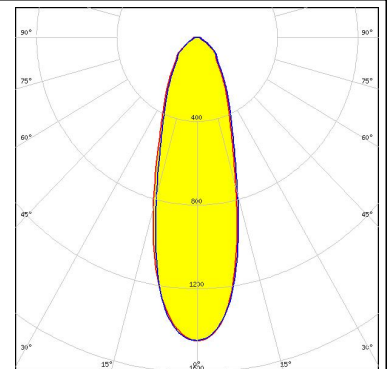
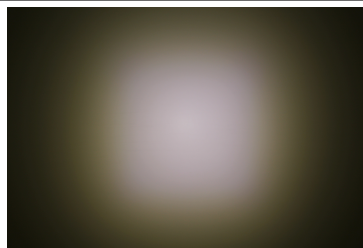


LED XT-E
 FWHM 27.0°
 Efficiency 94 %
 Peak intensity 1.600 cd/lm
 LEDs/each optic 1
 Light colour White
 Required components:



SEOUL SEMICONDUCTOR

LED Z5M3
 FWHM 32.0°
 Efficiency 94 %
 Peak intensity 1.500 cd/lm
 LEDs/each optic 1
 Light colour White
 Required components:



PHOTOMETRIC DATA (SIMULATED):

CREE

LED XP-G3
FWHM 33.0°
Efficiency 89 %
Peak intensity 1.400 cd/lm
LEDs/each optic 1
Light colour White
Required components:

LUMILEDS

LED LUXEON 3535L HE
FWHM 20.0°
Efficiency 90 %
Peak intensity 2.300 cd/lm
LEDs/each optic 1
Light colour White
Required components:

LUMILEDS

LED LUXEON HR30
FWHM 26.0°
Efficiency 91 %
Peak intensity 2.100 cd/lm
LEDs/each optic 1
Light colour White
Required components:

LUMILEDS

LED LUXEON TX
FWHM 28.0°
Efficiency 90 %
Peak intensity 1.800 cd/lm
LEDs/each optic 1
Light colour White
Required components:

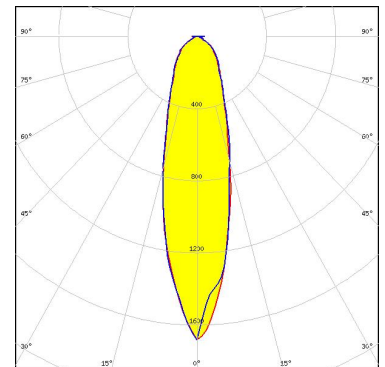
PHOTOMETRIC DATA (SIMULATED):



LED NVSxx19B/NVSxx19C
FWHM 30.0°
Efficiency 88 %
Peak intensity 1.590 cd/lm
LEDs/each optic 1
Light colour White
Required components:

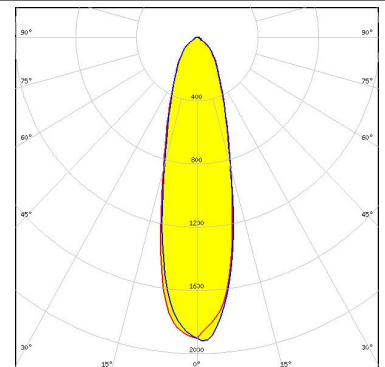
SAMSUNG

LED LH181A
FWHM 27.0°
Efficiency 94 %
Peak intensity 1.680 cd/lm
LEDs/each optic 1
Light colour White
Required components:



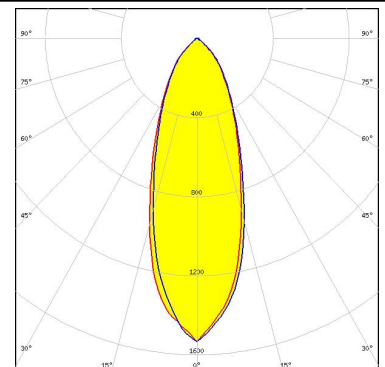
SAMSUNG

LED LH181B
FWHM 28.0°
Efficiency 94 %
Peak intensity 1.920 cd/lm
LEDs/each optic 1
Light colour White
Required components:



SAMSUNG

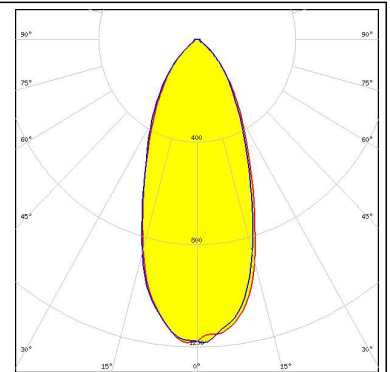
LED LH351C
FWHM 36.0°
Efficiency 93 %
Peak intensity 1.530 cd/lm
LEDs/each optic 1
Light colour White
Required components:



PHOTOMETRIC DATA (SIMULATED):

SAMSUNG

LED LH351D
FWHM 44.0°
Efficiency 92 %
Peak intensity 1.200 cd/lm
LEDs/each optic 1
Light colour White
Required components:



SEOUL SEMICONDUCTOR

LED Z8Y19
FWHM 23.0°
Efficiency 92 %
Peak intensity 1.800 cd/lm
LEDs/each optic 1
Light colour White
Required components:

GENERAL INFORMATION:

NOTE: The typical beam angle will be changed by different color, chip size and chip position tolerance. The typical total beam angle is the full angle measured where the luminous intensity is half of the peak value.

MATERIALS:

As part of our continuous research and improvement processes, and to ensure the best possible quality and availability of our products, LEDiL reserves the right to change material grades without notice.

PRODUCT DATA USER AGREEMENT AND DISCLAIMER:

The measured data in the provided downloadable LEDiL Product Datasheets and Mechanical 2D-Drawings is rounded and provided as reference for planning. LEDiL Oy's optical specifications have been verified by conducting performance testing of the products in accordance with the company's quality system. The reported data are averaged results of multiple measurements with typical variation. LEDiL Oy reserves the right to without prior notification make changes and improvements to its products.

LEDiL Oy assumes neither warranty, nor guarantee nor any other liability of any kind for the contents and correctness of the provided data. The provided data has been generated with highest diligence but the provided data may in reality not represent the complete possible variation range of all intrinsic parameters. Therefore, in certain cases a deviation from the provided data could occur.

LEDiL Oy reserves the right to undertake technical changes of its products without further notification which could lead to changes in the provided data. LEDiL Oy assumes no liability of any kind for the possible deviation from any provided data or any other damage resulting from the usage of the provided data.

The user agrees to this disclaimer and user agreement with the download or usage of the provided files.

LEDiL Oy

Joensuunkatu 13
FI-24240 SALO
Finland

LEDiL Inc.

228 West Page Street
Suite D
Sycamore IL 60178
USA

Local sales and technical support

[www.ledil.com/
where_to_buy](http://www.ledil.com/where_to_buy)

Shipping locations

Salo, Finland
Hong Kong, China

Distribution Partners

[www.ledil.com/
where_to_buy](http://www.ledil.com/where_to_buy)