

STRADILLA-IP-16-T2-PC

IESNA Type II (medium) beam applicable for European P-class standard pedestrian lighting and M-class roads. Variant made from PC.

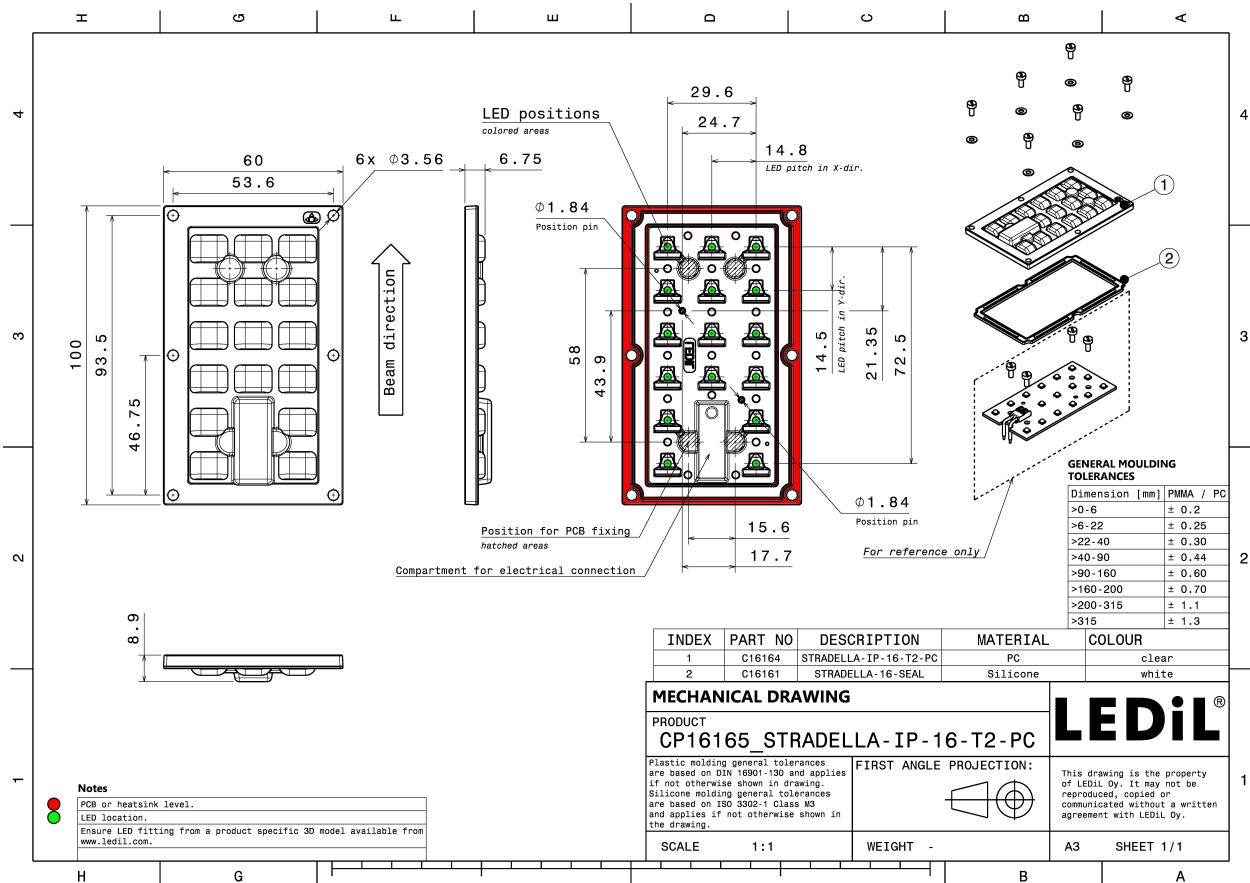
TECHNICAL SPECIFICATIONS:

| | |
|-----------------|--------------------|
| Dimensions | 100.0 x 60.0 mm |
| Height | 8.9 mm |
| Fastening | pin, screw |
| Colour | clear |
| Box size | 476 x 273 x 292 mm |
| Box weight | 12.1 kg |
| Quantity in Box | 416 pcs |
| ROHS compliant | yes ⓘ |



MATERIAL SPECIFICATIONS:

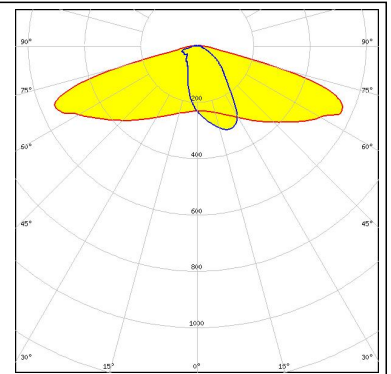
| Component | Type | Material | Colour |
|-----------------------|------------|----------|--------|
| STRADILLA-IP-16-T2-PC | Multi-lens | PC | clear |
| STRADILLA-16-SEAL | Seal | Silicone | white |



PHOTOMETRIC DATA (MEASURED):

CREE 

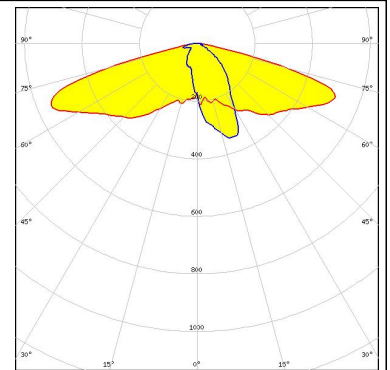
LED XP-G3
FWHM Asymmetric
Efficiency 90 %
Peak intensity 0.590 cd/m
LEDs/each optic 1
Light colour White
Required components:



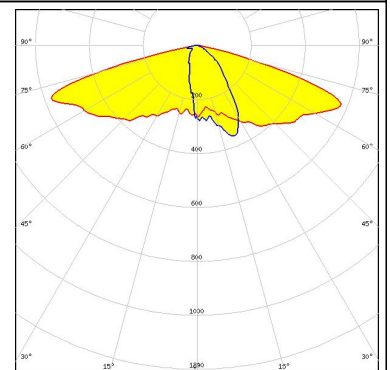
PHOTOMETRIC DATA (SIMULATED):



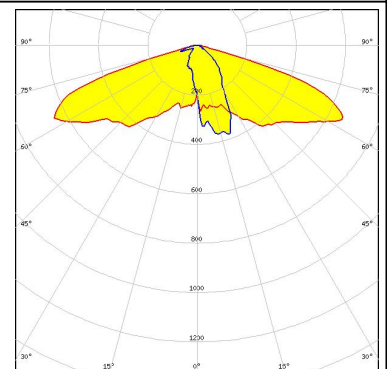
LED NCSxx19B
FWHM Asymmetric
Efficiency 85 %
Peak intensity 0.650 cd/lm
LEDs/each optic 1
Light colour White
Required components:



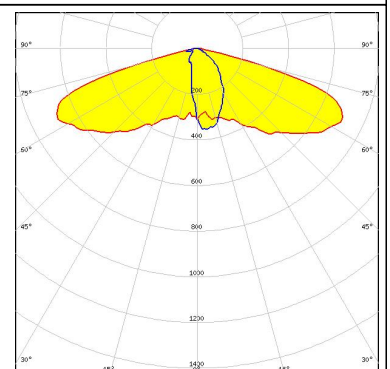
LED NF2x757G
FWHM Asymmetric
Efficiency 89 %
Peak intensity 0.658 cd/lm
LEDs/each optic 1
Light colour White
Required components:



LED NVSxE21A
FWHM Asymmetric
Efficiency 87 %
Peak intensity 0.780 cd/lm
LEDs/each optic 1
Light colour White
Required components:



LED Duris S5 (2 chip)
FWHM Asymmetric
Efficiency 88 %
Peak intensity 0.730 cd/lm
LEDs/each optic 1
Light colour White
Required components:

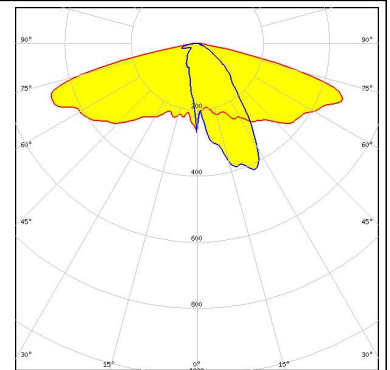


PHOTOMETRIC DATA (SIMULATED):

OSRAM

Opto Semiconductors

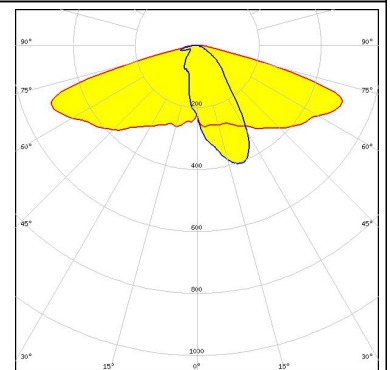
LED OSLON Square CSSRM2/CSSRM3
 FWHM Asymmetric
 Efficiency 89 %
 Peak intensity 0.610 cd/lm
 LEDs/each optic 1
 Light colour White
 Required components:



OSRAM

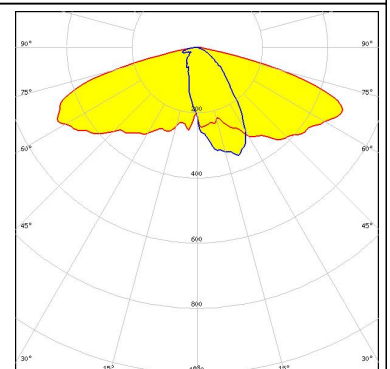
Opto Semiconductors

LED OSLON Square PC
 FWHM Asymmetric
 Efficiency 89 %
 Peak intensity 0.600 cd/lm
 LEDs/each optic 1
 Light colour White
 Required components:



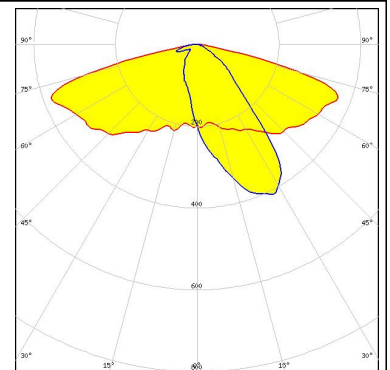
SAMSUNG

LED LH351B
 FWHM Asymmetric
 Efficiency 88 %
 Peak intensity 0.600 cd/lm
 LEDs/each optic 1
 Light colour White
 Required components:



SEOUL SEMICONDUCTOR

LED Z5M1/Z5M2
 FWHM Asymmetric
 Efficiency 89 %
 Peak intensity 0.570 cd/lm
 LEDs/each optic 1
 Light colour White
 Required components:



GENERAL INFORMATION:

NOTE: The typical beam angle will be changed by different color, chip size and chip position tolerance. The typical total beam angle is the full angle measured where the luminous intensity is half of the peak value.

MATERIALS:

As part of our continuous research and improvement processes, and to ensure the best possible quality and availability of our products, LEDiL reserves the right to change material grades without notice.

PRODUCT DATA USER AGREEMENT AND DISCLAIMER:

The measured data in the provided downloadable LEDiL Product Datasheets and Mechanical 2D-Drawings is rounded and provided as reference for planning. LEDiL Oy's optical specifications have been verified by conducting performance testing of the products in accordance with the company's quality system. The reported data are averaged results of multiple measurements with typical variation. LEDiL Oy reserves the right to without prior notification make changes and improvements to its products.

LEDiL Oy assumes neither warranty, nor guarantee nor any other liability of any kind for the contents and correctness of the provided data. The provided data has been generated with highest diligence but the provided data may in reality not represent the complete possible variation range of all intrinsic parameters. Therefore, in certain cases a deviation from the provided data could occur.

LEDiL Oy reserves the right to undertake technical changes of its products without further notification which could lead to changes in the provided data. LEDiL Oy assumes no liability of any kind for the possible deviation from any provided data or any other damage resulting from the usage of the provided data.

The user agrees to this disclaimer and user agreement with the download or usage of the provided files.

LEDiL Oy

Joensuunkatu 13
FI-24240 SALO
Finland

LEDiL Inc.

228 West Page Street
Suite D
Sycamore IL 60178
USA

Local sales and technical support

[www.ledil.com/
where_to_buy](http://www.ledil.com/where_to_buy)

Shipping locations

Salo, Finland
Hong Kong, China

Distribution Partners

[www.ledil.com/
where_to_buy](http://www.ledil.com/where_to_buy)