

DAHIA-TL110

~120° wide beam

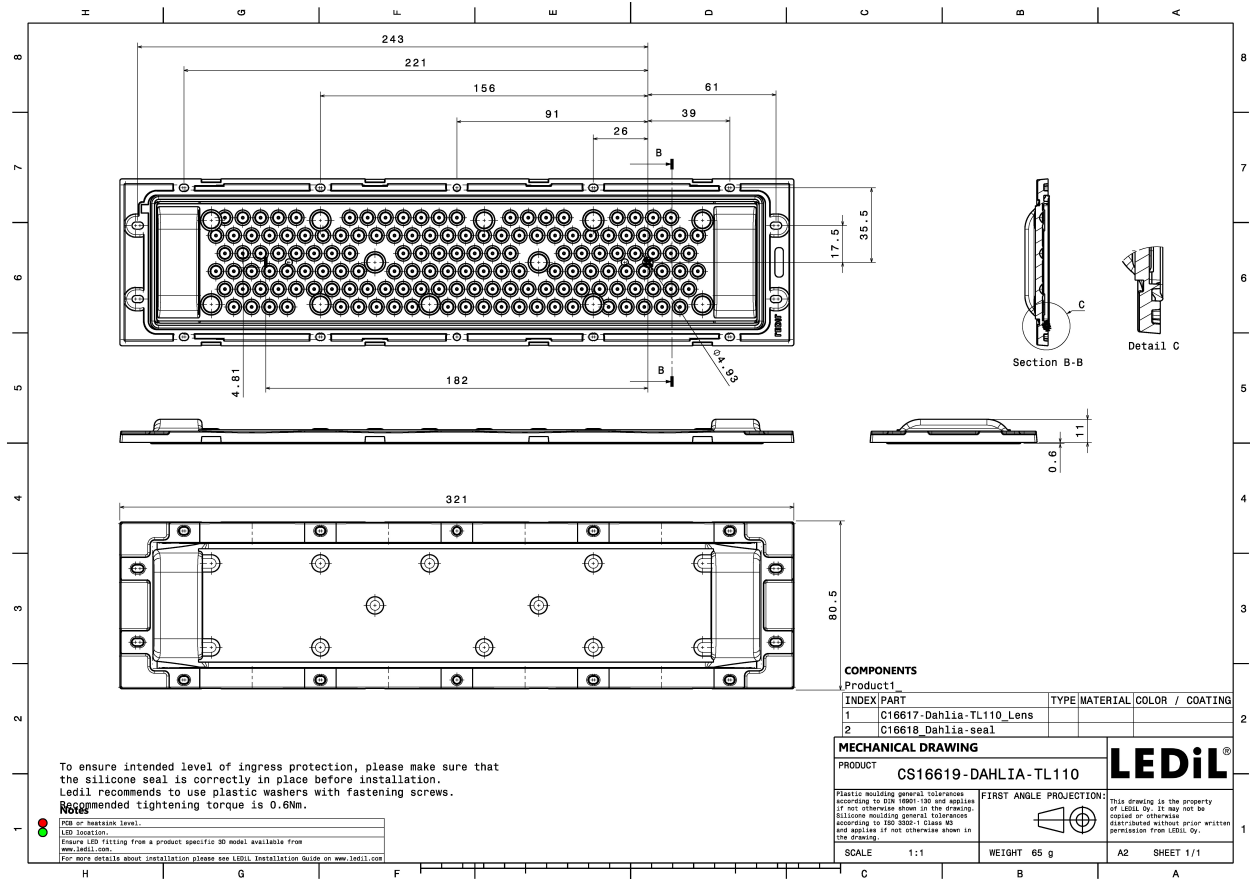
TECHNICAL SPECIFICATIONS:

Dimensions	321.0 x 80.5 mm
Height	11 mm
Fastening	screw
Colour	clear
Box size	343 x 343 x 298 mm
Box weight	7.7 kg
Quantity in Box	80 pcs
ROHS compliant	yes ⓘ



MATERIAL SPECIFICATIONS:

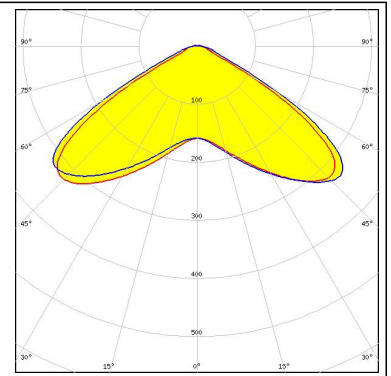
Component	Type	Material	Colour
DAHIA-TL110	Linear lens	PMMA	
DAHIA-TL-SEAL	Seal	Silicone	



PHOTOMETRIC DATA (MEASURED):

CEZOS

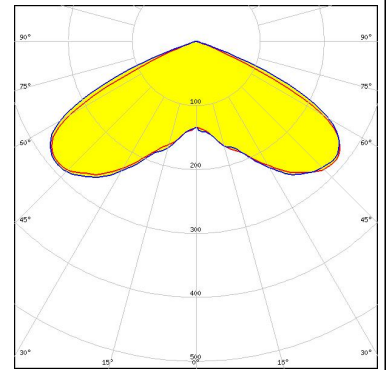
LED L0-278053-RRRR-C1000-K237
FWHM 122.0°
Efficiency 94 %
Peak intensity 0.340 cd/lm
LEDs/each optic 1
Light colour Red
Required components:



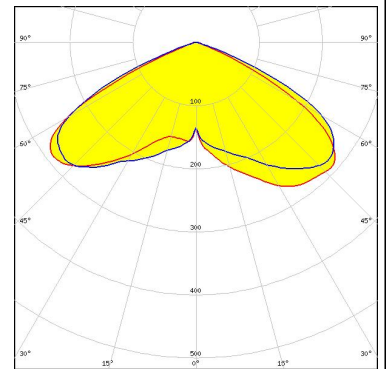
PHOTOMETRIC DATA (SIMULATED):



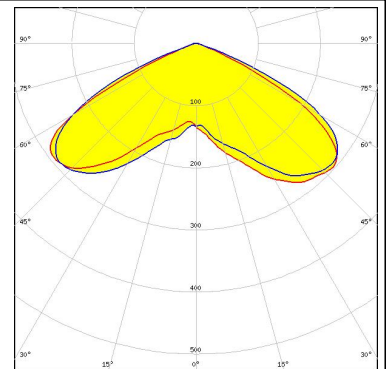
LED LUXEON 2835 Line
FWHM 118.0°
Efficiency 93 %
Peak intensity 0.290 cd/lm
LEDs/each optic 1
Light colour White
Required components:



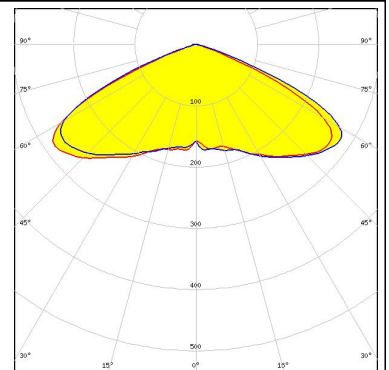
LED NF2x757G
FWHM 127.0°
Efficiency 92 %
Peak intensity 0.290 cd/lm
LEDs/each optic 1
Light colour White
Required components:



LED NFSx757G
FWHM 127.0°
Efficiency 93 %
Peak intensity 0.300 cd/lm
LEDs/each optic 1
Light colour White
Required components:



LED NVSxx19B/NVSxx19C
FWHM 132.0°
Efficiency 93 %
Peak intensity 0.280 cd/lm
LEDs/each optic 1
Light colour White
Required components:



GENERAL INFORMATION:

NOTE: The typical beam angle will be changed by different color, chip size and chip position tolerance. The typical total beam angle is the full angle measured where the luminous intensity is half of the peak value.

MATERIALS:

As part of our continuous research and improvement processes, and to ensure the best possible quality and availability of our products, LEDiL reserves the right to change material grades without notice.

PRODUCT DATA USER AGREEMENT AND DISCLAIMER:

The measured data in the provided downloadable LEDiL Product Datasheets and Mechanical 2D-Drawings is rounded and provided as reference for planning. LEDiL Oy's optical specifications have been verified by conducting performance testing of the products in accordance with the company's quality system. The reported data are averaged results of multiple measurements with typical variation. LEDiL Oy reserves the right to without prior notification make changes and improvements to its products.

LEDiL Oy assumes neither warranty, nor guarantee nor any other liability of any kind for the contents and correctness of the provided data. The provided data has been generated with highest diligence but the provided data may in reality not represent the complete possible variation range of all intrinsic parameters. Therefore, in certain cases a deviation from the provided data could occur.

LEDiL Oy reserves the right to undertake technical changes of its products without further notification which could lead to changes in the provided data. LEDiL Oy assumes no liability of any kind for the possible deviation from any provided data or any other damage resulting from the usage of the provided data.

The user agrees to this disclaimer and user agreement with the download or usage of the provided files.

LEDiL Oy

Joensuunkatu 13
FI-24240 SALO
Finland

LEDiL Inc.

228 West Page Street
Suite D
Sycamore IL 60178
USA

Local sales and technical support

[www.ledil.com/
where_to_buy](http://www.ledil.com/where_to_buy)

Shipping locations

Salo, Finland
Hong Kong, China

Distribution Partners

[www.ledil.com/
where_to_buy](http://www.ledil.com/where_to_buy)